

# Issue 10

to suit the widest range  
of ventilation applications



**new products  
available**



# Products for a wide range of applications

We provide, without doubt, the most comprehensive choice of ventilation systems available in the UK.

The Airvent range covers air movement, ventilation technologies and commercial hand dryers, along with our latest outdoor heating and pest control for residential and light commercial applications.

## index

<b>automatic</b> hand dryers	3
<b>ceiling sweep</b> fans	14
<b>domestic</b> range	16
<b>low profile</b> range	32
<b>commercial</b> range	36
<b>tile fan</b> range	42
<b>quiet fan</b> range	44
<b>accessories</b>	46
<b>panel</b> heater	50
<b>outside</b> heater	52
<b>insect</b> killers	56

# automatic hand dryers



# jet hand dryer junior



**Automatic double sided, high speed dryer,  
for low traffic settings.**

Key features:

- Approximately 10-12 seconds drying time
- LED indicator
- 99.9% HEPA filter
- UV Sterilisation

Technical specification:

- Brushed motor, as low as 1250W to 1650W
- Removable drip tray
- Air speed 150m/s
- Antibacterial coating
- IP23 Rated
- Weight 8.8kg
- Sound Level 70dB(A) at 1m
- Heater element 400W adjustable on/off
- Cable entry bottom right

Dimensions:

H671 x W279 x D195mm

Cat No	Description	Size HxWxD (mm)
499240	Automatic double sided hand dryer	671x279x195



# jet hand dryer



**This automatic double sided high speed, low energy hand dryer has been designed for use in many installations where speed and comfort of drying is of paramount importance.**

## Key features:

- Approximately 10 seconds drying time
- Unique "blue dry zone" indicator
- Powerful Operation
- Fitted with Anti-bacterial dust filter
- Low energy usage
- 2 speed & 2 heat settings
- LED Indicator

## Technical specification:

- Lo-Carbon DC Motor 750W-2050W
- 99.9% HEPA Filter
- UV Sterilisation
- 10 seconds drying time
- LED indicator
- Removable drip tray
- Air speed 95m/s
- Antibacterial coating
- IPX4 Rated Product range details:
- Rating Range @ 230volts 50/60Hz. 750 – 2050 watts
- Supply Voltage 220-240V 50Hz
- Heater Element- Can be switched off completely or adjusted 900-1300 watts
- Weight 9.5kg
- Sound Level 75dB(A) at 1m

## Dimensions:

H700 x W300 x D225mm

Cat No	Description	Size HxWxD (mm)
409393	Automatic double sided hand dryer	700x300x225

# ecoswift fast dry dryer



**High quality robust hand dryer ideal for use in many applications where fast hand drying and energy saving is essential.**

Key features:

- Automatic infra-red sensing
- Approximately 10-12 seconds drying time
- Steel cover white powder coated
- Powerful Operation
- Blue LED sensing zone
- Internal UV Protection
- Infra-red touch free activation
- Intelligent activation of heating element. Element switches on when the ambient temperature is 25°C or less

Technical specification:

- Insulation Earthed Class I
- GS Approved
- IPX1 Rated
- CE marked in accordance with all the relevant EEC Harmonised Directives
- Air velocity 60m/s

Product range details:

- Rated at 1150 Watts
- Supply Voltage 220-240V 50/60 Hz
- Weight 3.0kg (3.5kg packed)
- Motor 25000rpm brushed motor
- Sound level 75DbA at 1m
- Sensor Range 5-20cm

Dimensions:

H260 x W180 x D152mm

Cat No	Description	Colour	Size HxWxD (mm)
409733	1.1kW Compact ecoswift	White	260x180x157
409734	1.1kW Compact ecoswift	Satin Stainless Steel	260x180x157
409735	1.1kW Compact ecoswift	Polished Stainless Steel	260x180x157

# tornado fast dryer

**This automatic dryer is one of the fastest dryers and eco friendly in the market place. Available in 3 models - polished stainless steel, satin finish stainless steel and white namelled finish.**

Key features:

- 10-12 seconds drying time
- Blue LED for hand drying range
- Powerful Operation

Technical specification:

- Insulation Earthed Class I
- TUV/GS Approved, RoSH Compliant
- CE marked in accordance with all the relevant EEC Harmonised Documents
- IPX1 Rated
- Motor 700 watts
- Warm Air Speed Output 75-100m/s
- Air velocity 116m3/hr

Product range details:

- Motor Thermal Protection auto resetting at 105°C
- Supply Voltage 220-240V 50Hz
- Rated at 1.6kW at 240V
- Element 450-900 watts adjustable
- Weight 5.8kg (6.6kg packed)

Dimensions:

H277 x W201 x D175mm



Cat No	Description	Colour	Size HxWxD (mm)
437656	1.6kW Tornado	White	277x201x175
437661	1.6kW Tornado	Satin Stainless Steel	277x201x175
437659	1.6kW Tornado	Polished Stainless Steel	277x201x175

# automatic hand dryer

**High quality robust hand and face dryers ideal for use in many applications.**

Key features:

- Approximately 23 second dry time
- Infra –red touch free activation
- Blue LED dry zone indicator
- Rotating nozzle for hand or face drying
- Steel construction with chrome plated nozzles for added durability
- Anti-tamper fixing screws

Technical specification:

- Insulation Earthed Class I
- GS Approved
- IPX1 Rated
- CE marked in accordance with all the relevant EEC Harmonised Directives
- Air velocity 60m/s

Product range details:

- 2.3kW Output
- IPX Rating
- 70dBA at 1m
- Airspeed 26 m/s

Dimensions:

H237 x W270 x D208mm



Cat No	Description	Colour	Size HxWxD (mm)
477639	2.3kW Automatic hand dryer	White	237x270x208
477640	2.3kW Automatic hand dryer	Polished Stainless Steel	237x270x208



# automatic eco fast hand dryer

**This automatic dryer is most probably the smallest, most energy efficient and quickest hand drying model in the market.**

Key features:

- 10-12 seconds drying time
- Low energy usage
- Powerful Operation
- Saves up to 75% energy costs against a conventional dryer

Technical specification:

- Insulation Earthed class 1
- IPX1 rated
- Air velocity 113m3/hr
- TUV/GS Approved, RoSH Compliant
- CE marked in accordance with all the relevant EEC Harmonised Documents
- Warm Air Speed Output 75-100m/s

Product range details:

- Rated 1.0Kw at 220V
- Supply Voltage 220-240V 50Hz
- Sound level 75dBa at 1 metre
- Weight 3.8kg (4.2kg packed)
- Motor Thermal Protection auto resetting at 105°C
- Motor 500W
- Element 500W

Dimensions:

H180 x W250 x D138.5mm



Cat No	Description	Colour	Size HxWxD (mm)
444769	1.0kW Automatic eco fast dryer	Epoxy Coated	180x250x138.5

# automatic hand dryer



**This is a 'no touch' hand dryer with ABS cover. Ideal for applications where economy, hygiene, convenience and safety are of prime concern.**

Key features:

- Approximately 30 seconds drying time
- Finish white gloss ABS cover
- Quiet Operation
- Hygienic
- 2 Year Warranty

Technical specification:

- Earthed class 1
- IP22 rated
- Air velocity 110m3/hr
- CE marked in accordance with all the relevant EEC Harmonised documents universal motor
- GS approved

Product range details:

- Motor 4800rpm induction motor
- Supply Voltage 220-240V 50Hz
- Sound level 56dBA at 1m
- Weight 3.3kg (3.65kg packed)

Dimensions:

H275 x W225 x D160mm

Cat No	Description	Colour	Size HxWxD (mm)
429022	1.25kW Automatic hand dryer	Gloss White	275x225x160
496870	2.0kW Automatic hand dryer	Gloss White	275x225x160

# automatic hand dryer

**This automatic hand dryer has been specifically designed for food preparation areas and hospitals where the highest levels of hygiene have to be observed. Automatic no-touch hand dryer.**

Key features:

- Approximately 30 seconds drying time
- Cover satin polished stainless steel
- Quiet Operation

Technical specification:

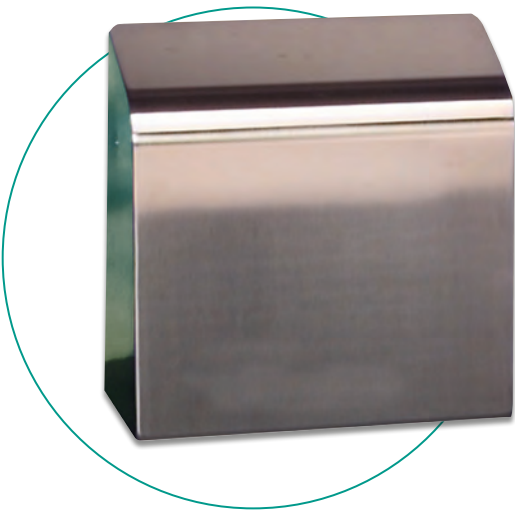
- Insulation Earthed Class I
- BEAB Approved
- IP24 Rated
- CE marked in a accordance with all the relevant EEC Directives
- Air velocity 200m3/hr

Product range details:

- Rated at 2.0kW at 240V
- Supply Voltage 220-240V/1/50Hz
- Weight 4.0kg (4.5kg packed)
- Motor 2700rpm external rotor motor
- Sound Level 65dB(A) at 1m

Dimensions:

H280 x W270 x D148mm



Cat No	Description	Colour	Size HxWxD (mm)
441356	2.0kW Automatic hand dryer	Stainless Steel	280x270x148

# fast hand dryer



**A robust, energy saving dryer suitable for many applications such as factories, shops, hotels, restaurants, airports and railway stations. Generally these dryers can be used in high usage areas where durability and energy efficiency is important**

**Key features:**

- 10-12 seconds drying time
- Blue LED for hand drying range
- Powerful Operation
- Intelligent Heating Element. Automatically turns off if ambient temperature is above 25°C.
- Touch Free
- Includes an antibacterial HEPA Filter. Kills 99.9% of germs
- Brushed motor- 20000rpm

**Technical specification:**

- Insulation Earthed Class I
- Third Party Approved, RoSH Compliant CE marked in accordance with all the relevant EEC Harmonised Documents
- IPX1 Rated
- Warm Air Speed Output 70m/s

**Product range details:**

- Rated at 1.20kW- 1.45kW at 220- 240V
- Supply Voltage 220-240V 50Hz
- Heating Element 650-750W
- Motor 550W-650W

**Dimensions:**

H312 x W225 x D172mm

Cat No	Description	Colour	Size HxWxD (mm)
499241	1.2kW Automatic	White	312x225x172
499242	1.2kW Automatic	Satin Steel	312x225x172





# ceiling sweep fans



# reversible ceiling fan

Our ceiling fans will provide effective and positive air movement to improve the working environment particularly during Summer months. In addition, our ceiling fans can be used during the Winter to recirculate hot air from under ceilings and roofs down to living and working areas thus helping to conserve energy.

An infinitely variable speed controller is available for use with one or a combination of models up to 3 units. Alternatively, our ceiling fans may be wired directly to a normal On/Off switch. For maximum benefit, good ventilation is vital, we advise that our ceiling fans are used in conjunction with supplementary ventilation units.

Our ceiling fan blades are produced from sheet steel and individually weighed to produce matched sets.

Key features:

- Suitable for winter De-stratification applications or summer cooling
- Three sweep diameters: 900mm, 1200mm, and 1400mm
- Two down rod lengths included
- Easy to install
- Quiet running
- Can be installed for either upward or downward airflow
- Reversible electronic controller available

Technical specification:

- Sweep Dia. 1200mm
- Colour White
- Air Displacement m3/h 12600
- Max. Watts Amps @ 240v 0.27

Cat No	Size
444122	36 inches
444123	48 inches
444124	56 inches



## controller



**Ceiling fan control. White cover plate can be flush or surface mounted. Suitable for commercial environments.**

Key features:

- Controls up to 3 fans

Cat No	Description
499301	Controls up to 3 fans



# **domestic** range





# axial fan

**100mm Axial standard extract fan suitable for panel mounting or wall/window mounting using the appropriate accessory kit.**

Key features:

- Wall or ceiling mounting
- All non pull-cord variants can be ceiling mounted
- High quality ABS mouldings
- With external gloss finish
- Quiet Operation

Technical specification:

- Meets the requirements of Building Regulation Document F
- IP44 rated, BEAB Approved, and CE marked in accordance with all the relevant EEC Harmonised Directives
- Double Insulated, class II motor fitted with thermal protection
- Hole Diameters: Window 105mm, Wall 115mm
- Airflow: Panel Mount 88m3/hr, Window/Wall 543m3/hr

Product range details:

- Rated Voltage 220-240v-50Hz
- Rated Wattage 16W
- Motor speed 2100rpm
- Noise Level 30dB(A)

Accessories:

- Window Kit
- Wall Kit
- External wall grille
- External gravity wall grille
- Ducting

Dimensions:

H154 x W154 x D47mm



Cat No	Description	m3/hr	Ltr/s	Watts	dB(A)@3m
457085A	Standard fan	88	24.44	16	32
459299A	Standard fan plus pull cord	88	24.44	16	32
457086A	Standard fan plus timer	88	24.44	16	32
459294A	Standard fan plus humidistat plus pull cord	88	24.44	16	32
459309A	Standard fan plus shutters and timer	88	24.44	20	32
459318A	Standard fan plus humidistat, pull cord and shutters	88	24.44	20	32



# axial fan



**150mm Axial extract fan with pull cord and electronic overrun timer adjustable from 1 minute to 25 minutes, the factory setting is 15 minutes. Suitable for panel mounting or wall/window mounting using the appropriate accessory kit.**

Key features:

- Suitable for panel, wall or window mounting
- All non pull-cord variants can be ceiling mounted
- High quality ABS mouldings with external gloss finish
- Quiet Operation
- Reversible grommet for surface of flush mounting

Technical specification:

- Meets the requirements of Building Regulation Document F
- IP22 rated, BEAB Approved, and CE marked in accordance with all the relevant EEC Harmonised Directives
- Double Insulated, class II motor fitted with thermal protection
- Hole Diameters: Window 160mm, Wall 170mm
- Airflow: Panel Mount 245m3/hr, Window/Wall 220m3/hr

Product range details:

- Rated Voltage 220-240v-50Hz
- Rated Wattage 25W

Accessories:

- Window Kit
- Wall Kit
- External wall grille
- External gravity wall grille
- Ducting

Dimensions:

H225 x W218 x D119mm

Cat No	Description	m3/hr	Ltr/s	Watts	dB(A)@3m
426566	Standard fan	245	68.06	25	45
438170	Standard fan and pull cord	245	68.06	25	45
438171	Standard fan and timer	245	68.06	25	45
435103	Standard fan plus shutters and pull cord	245	68.06	30	45
426568	Standard fan plus shutters and timer	245	68.06	30	45



# shower fan kit

## 100mm, axial, inline, shower fan kit with remote switching.

Key features:

- Fan, two grilles, fixings and 3m flexible, PVC ducting
- Quiet operation

Technical specification:

- Meets the installed performance requirements of Building Regulations Document F for an inline fan. IP44 rated. CE marked in accordance with all the relevant EEC Harmonised Directives. Double insulated, class II motor fitted with Thermal Protection
- Hole Diameters: Wall 115mm
- Airflow Installed: 82m<sup>3</sup>/hr installed
- Airflow, fan only, free air: 108m<sup>3</sup>/hr

Product range details:

- Rated Voltage 220-240v-50Hz
- Rated Wattage 14W
- Noise Level 37dB(A)

Grille Dimensions:

170 x W170 x D60mm

Dimensions:

H100 x W100 x D137mm



Cat No	Description	m3/hr	Ltr/s	Watts	dB(A)@3m
434445A	Inline standard fan	85	23.61	14	41
434446A	Inline standard fan plus timer	85	23.61	14	41



# centrifugal fan with timer



**100mm standard centrifugal fan with adjustable electronic overrun timer (1–20 minutes). Suitable for use in toilets, cloakrooms, bathrooms and shower rooms.**

Key features:

- Wall or Ceiling Mounting
- Suitable for wall or ceiling mounting
- High Impact ABS mouldings with external gloss finish
- Integral Backdraught Shutter
- Long Life Motor
- Flush or Surface Mountable
- Adjustable 98mm rear or side exit spigot

Technical specification:

- Meets the requirements of Building Regulation Document F
- IP44 rated
- BEAB Approved
- CE marked in accordance with all the relevant EEC Harmonised Directives
- Double Insulated, class II motor fitted with thermal protection
- Hole Diameters: Wall 117mm
- Airflow: 75m<sup>3</sup>/hr

Product range details:

- Rated Voltage 220-240v-50Hz
- Rated Wattage 11W
- Noise Level 36dB(A)

Accessories:

- Wall Kit
- External wall grille
- Flexible Ducting

Dimensions:

H256 x W210 x D100mm



Cat No	Description	m3/hr	Ltr/s	Watts	dB(A)@3m
AC100TN	Single speed fan with electronic over run timer	75	20.83	11	36





# domestic range

## part L compliant

These part L series of fans meet all the revised energy efficiency levels for new build and refurbishment applications as introduced in 2010, still allowing all other products to support the substantial replacement ventilation market



# centrifugal fan

**100mm filterless continuous running centrifugal fan has been designed for energy saving and to reduce condensation in the home and improve indoor air quality. The unit provides silent, continuous ventilation to any W.C., bathroom, utility room or kitchen. The unit can be supplied in mains and SELV versions.**

Key features:

- Designed to run continuously with a boost function to comply with part F & L
- Rated Voltage 220-240v-50Hz
- Rated Wattage 1.5W on trickle, 2.5W on low boost and 8W on high boost
- Low Trickle - 24.0dBA
- High Trickle - 25.9dBA
- Boost - 38.5dBA

Dimensions:

H265 x W210 x D90mm



Cat No	Description	Speed	Watts	dB(A)@3m
409737	Standard fan plus humidistat plus pull cord	Low	1.5	24
		High	2.5	25.9
		Boost	8	38.5
409738	SELV Standard fan plus humidistat plus pull cord	Low	1.5	24
		High	2.5	25.9
		Boost	8	38.5



# mixed flow fan



**100mm mixed flow high performance extract fan suitable for use in restricted spaces such as ceiling voids traditionally found in refurbishments.**

Key features:

- Integral foot plate provides secure, fast mounting
- Spigot designed for speedy installation of flexible ducting
- Mixed flow fans develop greater pressure than conventional axial fans making them ideal for use in ducted systems
- 3 Speed fan setting

Technical specification:

- Meets the requirements of Building Regulation Document F and L
- IPX4 rated CE marked in accordance with all the relevant EEC Harmonised Directives
- Double Insulated with motor fitted with Thermal Protection

Performance:

- High Speed: 245m<sup>3</sup>/h
- Low Speed: 180m<sup>3</sup>/h

Product range details:

- Rated Voltage 220-240v-50Hz
- High Rated Wattage 25W, Low Rated Wattage 20W
- High Speed Noise Level: 24dB(A) @ 3m, Low Speed Noise Level 20dB(A) @ 3m

Available Accessories:

- Wall Kit
- External wall grille
- Flexible Ducting
- Diameter of spigot: 98mm

Dimensions:

H180 x W168 x D298mm



Cat No	Description	Speed	m3/hr	Ltr/s	Watts	dB(A)@3m
442825	Inline standard fan 45Ltr per second	High	244	67.78	25	24
		Low	180	50	20	20
442826	Inline standard fan 45Ltr per second plus timer	High	244	67.78	25	24
		Low	180	50	20	20



# humidistat axial fan

**100mm axial extract fan with Humidity control which is adjustable between 40%RH and 95%RH complete with adjustable timer (1-20 mins) designed to meet the new part L building regulations, for use in bathrooms and toilets.**

Key features:

- SFP down 0.42W/l/s
- Suitable for wall or ceiling mounting
- High Quality ABS moulding with external gloss finish
- Quiet Operation
- Comes complete with backdraught shutter

Technical specification:

- Meets the requirements of Building Regulation Document F and L
- IP44 rated and CE marked in accordance with all the relevant EEC Harmonised Directives
- Double Insulated, class II motor fitted with thermal protection
- Airflow: 91.8m<sup>3</sup>/hr

Specific Fan Power (SFP) Requirements:

- Mechanical ventilation systems should be designed to minimise electric fan power. Specific fan power (SFP) should not be worse than:
  - i. 0.5 Watts per litres per seconds for intermittent extract ventilation systems
  - ii. 0.7 Watts per litres per seconds for continuous extract ventilation systems
  - iii. 1.5 Watts per litres per seconds for continuous supply and extract with heat recovery ventilation systems

Product range details:

- Rated Voltage - 220-240v-50Hz, Rated Wattage - 10.77W
- Motor speed - 2400rpm, Noise Level - 41dB(A)
- Max. Operating Temp - 40°C, Max. Pressure - 20Pa

Dimensions:

H205 x W205 x D110mm

Cat No	Description	m <sup>3</sup> /hr	Ltr/s	Watts	dB(A)@3m
448379	100mm Standard fan	92	25.5	11	45
448380	100mm Standard fan plus timer	92	25.5	11	45
448381	100mm Standard fan plus humidistat	92	25.5	11	45
448382	150mm Standard fan	230	63.89	18	40
448383	150mm Standard fan plus timer	230	63.89	18	40
448384	150mm Standard fan plus humidistat	230	63.89	18	40



new product



# quiet fan conceal x5

**The Quiet Fan X5 Conceal is the latest in domestic ventilation to incorporate a high extraction rate whilst producing an incredibly quiet running volume. Designed for wall and ceiling mounting, this comprehensive range is ideal for bathrooms and toilets.**

Key features:

- Wall or ceiling mounting
- High quality ABS thermoplastics for strength and durability
- Quiet operation

Technical specification:

- IPX5 rated for compliant zone 1 installation
- Long life motors warranted for a minimum of 30,000 hours or 3 years
- Integral backdraught shutters
- Airflow: 75m<sup>3</sup> /hr, 21 litres per second
- SFP: 0.29W/l/s
- Complies with both Part F & L

Product range details:

- Rated voltage 220-240v-50Hz
- Rated wattage 6W
- 28dB(A) at 3m

Dimensions:

H160 x W160 x D40mm



Cat No	Description	m3/hr	Ltr/s	Watts	dB(A)@3m
412442	Standard fan 21Ltr per second	75	21	6	28
412443	Standard fan with timer 21Ltr per second	75	21	6	28
412444	Standard fan with Humidistat timer 21Ltr per second	75	21	6	28





# inline axial shower fan kit



**Designed for the safe ventilation of bathrooms, toilets and shower rooms, by removing any risk of an electric shock in wet areas as the fan is mounted remotely.**

**Ø100mm, axial, inline, shower fan kit with electronic overrun timer adjustable from 1 to 20 minutes (the factory setting is 15 minutes). Includes fan with mounting foot, PVC flexible ducting, 2 white grilles, grille fixing clips and screw plugs.**

Technical specification:

- Meets the installed performance requirements of Building Regulations Document F and L for an inline fan
- IP44 rated. CE marked in accordance with all the relevant EEC Harmonised Directives.
- Double insulated, class II motor fitted with Thermal Protection
- Airflow: Maximum 24ltrs per seconds installed
- Sound: 40dBA at 3 metres

Specific Fan Power (SFP) Requirements:

- 1.0 a. Mechanical ventilation systems should be designed to minimise electric fan power. Specific fan power (SFP) should not be worse than:
  - i. 0.5 Watts per litres per seconds for intermittent extract ventilation systems
  - ii. 0.7 Watts per litres per seconds for continuous extract ventilation systems
  - iii. 1.5 Watts per litres per seconds for continuous supply and extract with heat recovery ventilation systems

Product range details:

- Rated Voltage: 220-240V 50Hz
- Motor: 2400rpm
- Rated Power: 10.4W
- Maximum Pressure: 20 p.a.
- Maximum Operating Temperature: 40°C



Cat No	Description	m3/hr	Ltr/s	Watts	dB(A)@3m
448385	100mm Inline standard fan	86	24	10	41
448386	150mm Inline standard fan	227	63	20	40

# led shower fan & light kit

**This powerful 100mm in-line LED shower fan and light kit with timer, is designed for the safe ventilation of bathrooms, toilets and shower rooms by removing any risk of an electric shock in wet areas as the fan is mounted remotely.**

Key features:

- SFP down to 0.43W/l/s
- Incorporates an integral adjustable electronic timer (1-20 mins)
- Quiet Operation
- Limited to 1.5mtrs of ducting when connected to an axial fan

Technical specification:

- Meets the requirements of Building Regulation Document F and L
- IP44 rated
- CE marked in accordance with all the relevant EEC Harmonised Directives
- Double Insulated, class II
- Motor fitted with thermal protection
- Airflow: Maximum 24 lts/sec

Product range details:

- Rated Voltage 12 volt DC 3WMR16 lamp. Powered by an LED driver
- Maximum Pressure – 20Pa
- Rated Wattage- 10.4watts
- Sound Volume- 41dB(A)
- Max Operating Temp – 40°C

Kit Comprises of the following:

- In Line 100mm shower fan
- White/Chrome fitting Shower Light and fitting
- 12 Volt Transformer
- 1.5mtrs PVC Ducting
- Butterfly clips, cable ties and screw plugs
- External Grille

Specific Fan Power (SFP)

Requirements:

- 1.0 a. Mechanical ventilation systems should be designed to minimise electric fan power. Specific fan power (SFP) should not be worse than:
  - i. 0.5 Watts per litres per seconds for intermittent extract ventilation systems
  - ii. 0.7 Watts per litres per seconds for continuous extract ventilation systems
  - iii. 1.5 Watts per litres per seconds for continuous supply and extract with heat recovery ventilation systems



Cat No	Description	m3/hr	Ltr/s	Watts	dB(A)@3m
477523	Inline standard fan plus timer complete with LED light kit, white and chrome bezels	86	24	10.4	41



# flow fan with shower fan and light kit



## **100mm Inline mixed flow fan plus timer with LED shower and light kit.**

### **Inline mixed flow fan**

Key features:

- Integral foot plate provides secure, fast mounting
- Spigot designed for speedy installation of flexible ducting
- Mixed flow fans develop greater pressure than conventional axial fans making them ideal for use in ducted systems
- 3 Speed fan setting

Technical specification:

- Fully Building Code Compliant
- IPX4 rated CE marked in accordance with all the relevant EEC Harmonised Directives
- Double Insulated with motor fitted with Thermal Protection

Product range details:

- Rated Voltage 220-240v-50Hz
- High Rated Wattage 48W
- Low Rated Wattage 28W
- High Speed Noise Level: 35dB(A) @ 3m
- Low Speed Noise Level 21dB(A) @ 3m
- High Speed: 500m<sup>3</sup>/h
- Low Speed: 240m<sup>3</sup>/h

Accessories:

- Wall Kit
- External wall grille
- Flexible Ducting
- Diameter of spigot: 98mm

Dimensions:

H230 x W175 x D260mm

## LED shower and light kit

Key features:

- SFP down to 0.43W/l/s
- Incorporates an integral adjustable electronic timer (1-20 mins)
- Quiet Operation
- Limited to 1.5m of ducting when connected to an axial fan

Technical specification:

- Meets the requirements of Building Regulation Document F and L
- IP44 rated
- CE marked in accordance with all the relevant EEC Harmonised Directives
- Double Insulated, class II
- Motor fitted with thermal protection
- Airflow: Maximum 24 lts/sec

Product range details:

- Rated Voltage: 220-240V 50Hz
- Rated Power: 10.4W
- Maximum Pressure: 20 p.a.
- Sound Volume- 41dB(A)
- Maximum Operating Temperature: 40°C

Specific Fan Power (SFP) Requirements:

- 1.0 a. Mechanical ventilation systems should be designed to minimise electric fan power. Specific fan power (SFP) should not be worse than:
  - i. 0.5 Watts per litres per seconds for intermittent extract ventilation systems
  - ii. 0.7 Watts per litres per seconds for continuous extract ventilation systems
  - iii. 1.5 Watts per litres per seconds for continuous supply and extract with heat recovery ventilation systems

Cat No	Description	Speed	m3/hr	Ltr/s	Watts	dB(A)@3m
477638	100mm Inline mixed flow fan plus timer with LED shower & light kit	High	244	67.78	25	24
		Low	180	50	20	20



# low profile range





# slim axial fan

**Slim axial extract fan with backdraught shutters. Suitable for panel mounting or wall mounting using the appropriate accessory kit.**

Key features:

- Slim - only 15mm thick
- Suitable for wall or ceiling mounting
- High Quality ABS mouldings with external gloss finish
- Quiet Operation

Technical specification:

- Meets the requirements of Building Regulation Document F
- IP44 rated, BEAB Approved, and CE marked in accordance with all the relevant EEC Harmonised Directives
- Double Insulated, class II motor fitted with thermal protection
- Hole Diameters: Wall 115mm
- Airflow: Panel Mount 90m3/hr

Product range details:

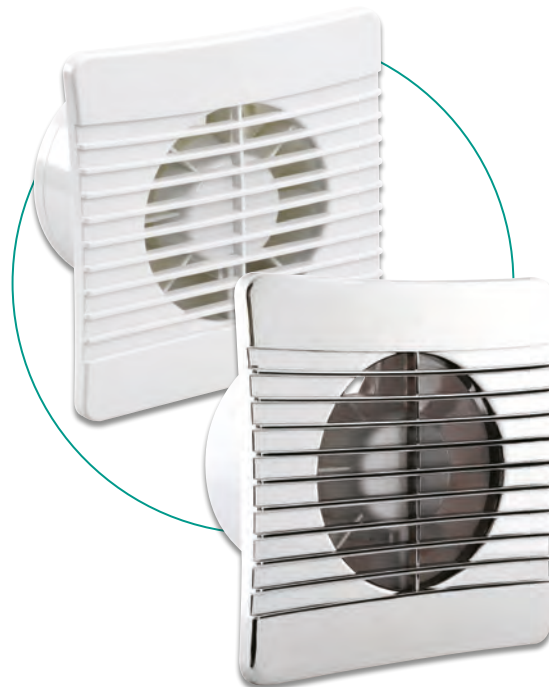
- Rated Voltage 220-240v-50Hz
- Rated Wattage 16W
- Noise Level 37.8dB(A)

Accessories:

- Wall Kit
- External wall grille
- External gravity grille
- Ducting

Dimensions:

H159 x W159 x D15mm



Cat No	Description	m3/hr	Ltr/s	Watts	dB(A)@3m
431301	Standard fan	90	25	14	38
431302	Standard fan plus timer	90	25	14	38
404119	Standard fan plus timer, Chrome	90	25	14	38
434399	Standard SELV 12V fan plus timer	90	25	23	38
495942	Standard fan plus timer and humidistat	90	25	14	38
495943	Standard SELV fan plus timer and humidistat	90	25	23	38



# standard slim axial fan



**Slim axial extract fan with backdraught shutter and humidity sensor. Suitable for panel mounting or wall mounting using the appropriate accessory kit. The humidity setting is adjustable 60%RH to 90%RH. The factory setting is 75% RH.**

**Key features:**

- Slim, only 15mm thick
- Wall or ceiling mounting
- High quality ABS mouldings with external gloss finish
- Quiet Operation

**Technical specification:**

- Meets the requirements of Building Regulation Document F
- IP44 rated, GS Approved, and CE marked in accordance with all the relevant EEC Harmonised Directives
- Double Insulated, class II motor fitted with thermal protection
- Hole Diameters: Wall 155mm
- Airflow: Panel Mount 216m<sup>3</sup>/hr

**Product range details:**

- Rated Voltage 220-240v-50Hz
- Rated Wattage 20W
- 45dBA @ 3m

**Accessories:**

- Wall Kit
- External wall grille
- External gravity wall grille
- Ducting

**Dimensions:**

H225 x W225 x D15mm



Cat No	Description	m3/hr	Ltr/s	Watts	dB(A)@3m
435403	Standard fan	228	63.33	16	45
435404	Standard fan plus timer	228	63.33	16	45
435405	Standard fan plus humidistat	228	63.33	16	45





# commercial range



# commercial fan

**230mm fan with automatic operated shutters suitable for panel, wall or window mounting using the appropriate accessory kit. Suitable for commercial applications in pubs, hotels, restaurants, offices, schools, shops and factories.**

Key features:

- Suitable for panel/wall mounting or window mounting with appropriate window accessory kit
- Simple installation
- External 2 speed reversible on/off controller available
- Manufactured impact resistant high gloss ABS for strength and durability
- Motor fitted with thermal over load protection

Technical specification:

- Meets the requirements of Building Regulation Document F
- IP44 rated, DEMKO Approved, and CE marked in accordance with all the relevant EEC Harmonised Directives
- Double Insulated, class II motor fitted with thermal protection
- Hole Diameters: Window 260mm, Wall 280mm
- Panel Mount Airflow: 259l/sec, Window/Wall Mount Airflow 190l/sec

Product range details:

- Rated Voltage 220-240v-50Hz
- Rated Wattage 90w

Accessories:

- Wall Kit
- Speed Controller

Dimensions:

H340 x W340 x D158mm

Cat No	Description	Speed	m3/hr	Ltr/s	Watts	dB(A)@3m
401893	230mm 9" standard fan plus auto shutters 259Ltr/sec	High	932	258.89	90	52
		Low	684	190	90	51
401891	230mm 9" standard fan with fixed grille 259Ltr/sec	High	932	258.89	90	52
		Low	684	190	90	51
401896	300mm 12" standard fan plus auto shutters 415Ltr/sec	High	1494	415	100	53
		Low	961	266.94	100	52
401894	300mm 12" standard fan with fixed grille 415Ltr/sec	High	1494	415	100	53
		Low	961	266.94	100	52
401940	Window kit for 230mm"					
401941	Window kit for 300mm"					





new product



# lo-watt PIV system

The Positive Input Ventilation (PIV) unit has been designed to prevent and treat condensation and mould quickly. It is perfect for refurbished properties thanks to it being easy to fit for installers and discreet for homeowners. The unit offers a quick and simple solution as it draws fresh air from the loft, filters it and gently feeds it into the dwelling via a ceiling-mounted diffuser. Clean, fresh filtered air with a lower moisture content dilutes, displaces and replaces contaminated and moisture-laden air.

Key features:

- Fully adjustable between 19l/s - 49l/s
- Low running costs
- Low sound level
- Complete with ceiling diffuser, flexible 2m duct and G4 filters

The PIV unit can also be set to 'Radon' mode in properties that are affected by high radon gas levels. The unit will run continuously to ensure supply of good indoor air to protect residents from harmful gases.

Technical specification:

- IPX2 rated
- Easy to install and commission

Dimensions:

H365 x W930 x D425mm

(For full details of dimensions please scan the QR code below to refer to the spec sheet)



Cat No	Description
412445	Lo-Watt Positive Input Ventilation (PIV) System

# lo-watt PIV system with heater

The Positive Input Ventilation (PIV) unit has been designed to prevent and treat condensation and mould quickly. It is perfect for refurbished properties thanks to it being easy to fit for installers and discreet for homeowners. The unit offers a quick and simple solution as it draws fresh air from the loft, filters it and gently feeds it into the dwelling via a ceiling-mounted diffuser. Clean, fresh filtered air with a lower moisture content dilutes, displaces and replaces contaminated and moisture-laden air. The PIV unit with heater comes with a heater fitted to the unit, this helps remove cold air entering the property. The controls allow the unit with 500W heater to be adjusted making it adaptable for different lifestyles.

Key features:

- 500W Heater
- Fully adjustable between 19l/s - 49l/s
- Low running costs
- Low sound level
- Complete with ceiling diffuser, flexible 2m duct and G4 filters

The PIV unit can also be set to 'Radon' mode in properties that are affected by high radon gas levels. The unit will run continuously to ensure supply of good indoor air to protect residents from harmful gases.

Technical specification:

- IPX2 rated
- Easy to install and commission

Dimensions:

H365 x W930 x D425mm

(For full details of dimensions please scan the QR code below to refer to the spec sheet)



Cat No	Description
412446	Lo-Watt Positive Input Ventilation (PIV) System with Heater

# mixed flow fan



**125mm mixed flow high performance extract fan suitable for use in restricted spaces such as ceiling voids traditionally found in refurbishments.**

Key features:

- Integral foot plate provides secure, fast mounting
- Spigot designed for speedy installation of flexible ducting
- Mixed flow fans develop greater pressure than conventional axial fans making them ideal for use in ducted systems
- 3 Speed fan setting

Technical specification:

- IPX4 rated CE marked in accordance with all the relevant EEC Harmonised Directives
- Double Insulated with motor fitted with Thermal Protection

Product range details:

- Rated Voltage 220-240v-50Hz
- High Rated Wattage 48W
- Low Rated Wattage 28W
- High Speed Noise Level: 35dB(A) @ 3m
- Low Speed Noise Level 21dB(A) @ 3m
- High Speed: 500m3/h
- Low Speed: 240m3/h

Accessories:

- Wall Kit
- External wall grille
- Flexible Ducting
- Diameter of spigot: 98mm

Dimensions:

H230 x W175 x D260mm

Cat No	Description	Speed	m3/hr	Ltr/s	Watts	dB(A)@3m
477633	125mm Inline standard fan	High	310	86	33	35
		Low	240	67	28	31
477634	125mm Inline standard fan plus timer	High	310	86	33	35
		Low	240	67	28	31
477635	150mm Inline standard fan	High	500	138	48	35
		Low	400	111	42	31
477636	150mm Inline standard fan plus timer	High	500	138	48	35
		Low	400	111	42	31

# fan controller

By incorporating this controller into your installation, enables you to be able to switch between low and high speed. You will also be able to switch the fan into reverse mode.

- Key features:
- 2 speed and off
  - Reversible

Cat No	Description
401961	2 Speed and off. Reversible





# tile fan range



# tile fans

**100mm axial fan which has a unique design that allows the fan to fit unobtrusively into any wall or ceiling. The tile design allows the fan to blend into the décor of the room. This unit is not suitable for Window mounting.**

Key features:

- Unique tile design
- Long life motor
- Easy to install and maintain
- Quiet and Efficient

Technical specification:

- Meets the requirements of Building Regulation Document F
- IP24 rated, BEAB Approved, and CE marked in accordance with all the relevant EEC Harmonised Directives
- Double Insulated, class II motor fitted with thermal protection
- Hole Diameters: Wall 115mm
- Airflow: Wall 75m3/hr

Accessories:

- Wall Kit
- External wall grille
- Ducting

Dimensions:

H140 x W140 x D105mm



Cat No	Description	m3/hr	Ltr/s	Watts	dB(A)@3m
442828	Tile fan 100mm	75	20	15	41
442829	Tile fan 100mm plus timer	75	20	15	41
442830	Tile fan 100mm plus humidistat	75	20	15	41



# quiet fan range



# quiet fans

The Quiet Fan is the latest in domestic ventilation to incorporate a high extraction whilst producing an incredibly quiet running volume.

Designed for wall and ceiling mounting, this comprehensive range is ideal for bathrooms and toilets.

The unit also comes complete with a performance enhancing turning vane system located in the spigot to improve performance by maintaining a high output.

Key features:

- High quality ball bearing, long life motors continuously rated and warranted for a minimum of 30,000 hours or 3 years
- Manufactured using high impact or gloss ABS thermoplastics for strength and durability
- Decibel Level of ONLY 27dB(A) at 3m. Over 60% reduction in comparison to standard 4" (100mm) domestic fans
- An impressive extraction rate of 75m<sup>3</sup>/hr, 21 litres per second
- Low energy motor with a maximum consumption of 4.8 Watts
- The most environmentally friendly fan in the Sector range with an SFP of 0.24W/L/S
- Complete with integral backdraught shutters
- Complies with both Part F & L

Technical specification:

- Maximum Pressure: 23 p.a.
- Fan Speed: 2300 r.p.m.
- Sound Volume: 27 dB(A)
- Maximum Operating Temperature: 40°C

Dimensions:

H163 x W111 x D28mm



Cat No	Description	m3/hr	Ltr/s	Watts	dB(A)@3m
406957	Quiet fan 100mm	75	21	4.8	27
406958	Quiet fan 100mm plus timer	75	21	4.8	27
406959	Quiet fan 100mm plus humidistat	75	21	4.8	27







accessories



# flat ducting

Cat No	Description	Size
404120	Flat channel lengths 1m	100mm x 54mm Flat Ducting
404121	Flat channel lengths 2m	100mm x 54mm Flat Ducting
404122	Short round to rectangle adaptor male	100mm x 54mm Flat Ducting
404123	Flat channel connector	100mm x 54mm Flat Ducting
404124	Elbow bend 90° Male	100mm x 54mm Flat Ducting
404125	Elbow bend 90° Female	100mm x 54mm Flat Ducting
404126	Vertical 90° bend	100mm x 54mm Flat Ducting
404127	Horizontal 90° bend	100mm x 54mm Flat Ducting
404128	Horizontal air brick	100mm x 54mm Flat Ducting
404129	Air brick grille	100mm x 54mm Flat Ducting
404130	Flat channel clips pair	100mm x 54mm Flat Ducting
404131	T Piece	100mm x 54mm Flat Ducting
404132	Flat channel lengths 1.5m	204mm x 60mm Flat Ducting
404133	Horizontal 90° bend	204mm x 60mm Flat Ducting
404134	Vertical 90° bend	204mm x 60mm Flat Ducting
404135	Duct clip pair	204mm x 60mm Flat Ducting
404136	Connector	204mm x 60mm Flat Ducting
404137	Elbow bend 90° Male	204mm x 60mm Flat Ducting
404138	Round to rectangle adaptor	204mm x 60mm Flat Ducting
404139	Air brick connector and grille	204mm x 60mm Flat Ducting
404140	T Piece	204mm x 60mm Flat Ducting





# commercial range accessories



Cat No	Cat No	Description
401897		PVC Ducting 3m 100mm
401898		PVC Ducting 3m 150mm
401903	401905	Gravity grille 100mm - white (401903) or brown (401905)
401904		Gravity grille 150mm - white (401904)
401907	401909	Fixed grille 100mm - white (401907) or brown (401909)
401908	401910	Fixed grille 150mm - white (401908) or brown (401910)
401899		Window fixing kit 100mm
401900		Window fixing kit 150mm
401901		Wall fixing kit 100mm
401902		Wall fixing kit 150mm

## multi vent & accessories

Cat No	Description
478192	Continuous running whole house mechanical extract ventilation unit. 3 speeds, Low - 45ltr/s, Medium - 85ltr/s, High - 123ltr/s.
404153	60-215mm Worm drive hose clip
404155	Extract diffuser
404156	Supply diffuser



478192



404153



404155



404156

## additional accessories

Cat No	Description
409736	100mm diameter 10m insulated ducting
404141	PVC Flexible Ducting 100mm x 15m
404142	PVC Flexible Ducting 100mm x 45m
404143	100mm x 350mm ABS Pipe
404144	100mm diameter Y Piece
404145	150mm - 100mm Reducer
404146	100mm Round Grille White
404147	100mm Round Grille Chrome
401899	Window fixing kit 100mm
401900	Window fixing kit 150mm
401901	Wall fixing kit 100mm
401902	Wall fixing kit 500mm



404141

404142



409736



404145



404144



404146/47



401901/02



401900/01

# panel heater

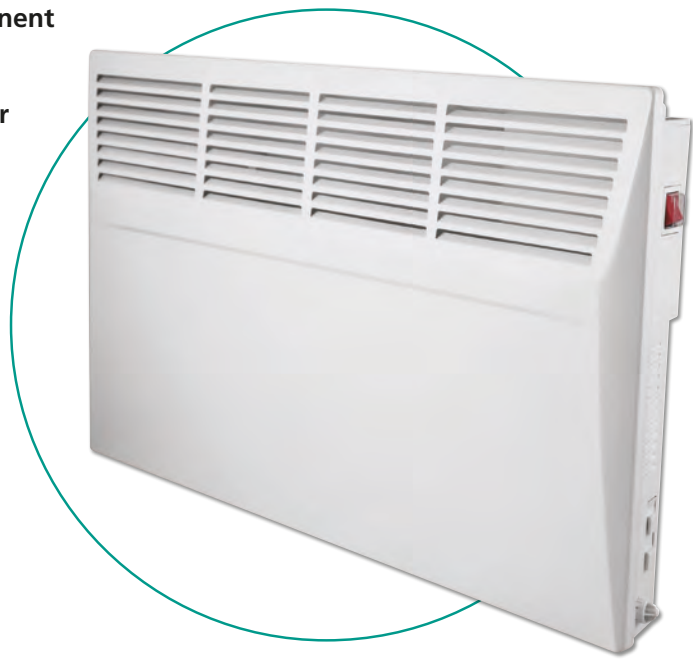


# panel heater

The 24/7 Panel Heater connects directly to the permanent electricity supply offering two heat output settings depending on your heating needs. The timer option allows user to select one of 12 pre-set programmes or create a customised 'DIY' heating programme. Wall fixtures are included.

- Key features:
- Silent in operation
  - Lot 20 compliant
  - High efficiency of airflow with over 95% of used energy creating heat
  - User friendly LCD display screen
  - 12 pre-set programmes available
  - 1 user defined programme available
  - Programme and real-time clock memory function
  - Thermostat for temperature setting (5°C-30°C)
  - Adjustable temperature in Normal and Economic modes
  - 24 hour On/Off Timer
  - Anti-frosting function
  - Ionizer function
  - Child safety lock
  - Over-heat safety protection
  - IP24 rated

- Technical specification:
- 230-240V (50Hz)
  - CE, EMC, LVD, RoHS, ERP approval
  - 15-18m<sup>3</sup>
  - Weight 5.1kg (6.3kg packed)



Cat No	Watts	Heating Area	Size HxWxD (mm)
495646	1kW	10-13m <sup>3</sup>	440x455x125
495647	1.5kW	15-18m <sup>3</sup>	440x615x125
495648	2kW	20-23m <sup>3</sup>	440x775x125

With integral 7 day 24 hour LCD electronic timer and controls



# outside heater



# radiant heater

The radiant heater is the ideal choice for those that want to use their outdoor space. It is great for pubs, cafes, bars, restaurants and installation at home with a heating range of 10-12m². The heater comes delivered with an easy-to-mount wall bracket and cable to speed up installation.

Key features:

- Instant heat from switch on
- Outdoor or indoor use
- Economical and easy to install
- Silent in operation
- No yearly maintenance cost
- Shortwave IR halogen lamp
- One second heat up time
- Precision heating directed where you need it
- Up to 5000 hours element life span
- IP65 rated to safely work in the rain

Dimensions:

H190 x W460 x D220mm (with bracket)  
H190 x W460 x D113mm (without bracket)

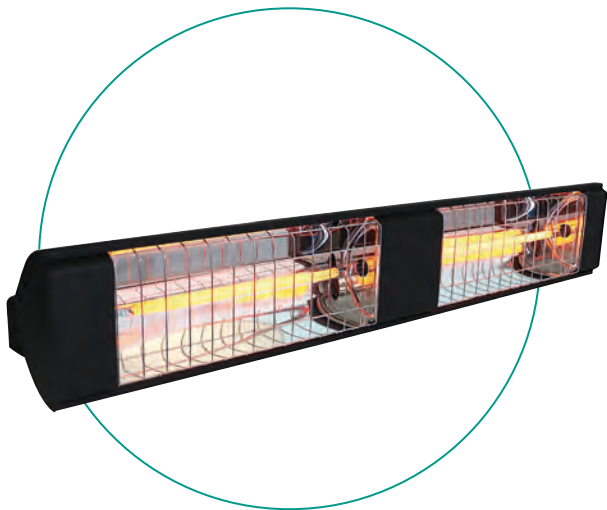


Cat No	Watts	Heating Area	Size HxWxD (mm)
497285	2kW	10-12m²	190x460x113



# radiant heater

**Great for home patios, pubs, cafes, bars, and restaurants, the 3kW unit is also ideal for workshops and warehouse maintenance areas.**



**Key features:**

- Instant heat from switch on
- Outdoor or indoor use
- Economical and easy to install
- Silent in operation
- No yearly maintenance cost
- Shortwave IR halogen lamp
- One second heat up time
- Precision heating directed where you need it
- Up to 10000 hours element life span
- Easy-to-mount wall bracket and cable supplied

**Technical specification:**

- Heater Wattage: 3kW
- IP54 rated to safely work in the rain

**Product range details:**

- Lamp Type: Carbon fibre
- Grille: 304 stainless steel
- Housing: Power-coated is black aluminium
- Weight: 4.2kg

**Dimensions:**

- H150 x W935 x D97.5mm (with bracket)
- H150 x W935 x D85.5mm (without bracket)

Cat No	Watts	Heating Area	Size HxWxD (mm)
497948	3kW	18-36m <sup>2</sup>	150x935x85.5



# insect killers





# portable insect killer

**The long life portable insect killer uses high efficiency LEDs to attract bothersome insects. Made from fire proof ABS, fade, crack and scratch resistant high quality aluminium this insect killer has a coverage of up to 50m<sup>2</sup>.**

Key features:

- High efficiency long life (50,000 hrs) LEDs for attracting insects
- Coverage 50m<sup>2</sup>
- ABS fire proof plastic as material or high safety
- Micro switch for high safety
- Extract fan for high efficiency
- Includes brush for cleaning and maintenance
- For all safety instructions see the specification sheet

Technical specification:

- Approved to EN60335-2-59 (Insect Killer standard), CE/GS/ROHS

Product range details:

- Power: 5.5W
- Weight: 0.7kg
- Approved to EN60335-2-59 CE/GS/ROHS

Dimensions:

H210 x W200 x D75mm



Cat No	Coverage Area	Size HxWxD (mm)
497135	50m <sup>3</sup>	210x200x75

# insect killer



**The long life insect killer uses Energy efficient UV-A lamps to attract bothersome insects. Made from fire proof ABS, fade, crack and scratch resistant high quality aluminium this insect killer has a coverage of 80-150m<sup>2</sup>.**

Key features:

- Durable ABS fire proof plastic on side panels
- Large removable collection tray for easy cleaning
- High quality aluminium, easy to clean.  
Crack, fade, scratch and oil resistant
- Full protected outer mesh
- Energy efficient UV-A lamp
- Suspendable or free standing
- For all safety instructions see the specification sheet

Technical specification:

- Approved to EN60335-2-59 (Insect Killer standard),  
CE/GS/ROHS/REACH/PAH(TUV)

Cat No	Coverage Area	Wattage	Weight	Size HxWxD (mm)
497136	50m <sup>2</sup>	2x8W	1.83kg	260x340x100
497137	80m <sup>2</sup>	2x10W	2.6kg	310x388x100
497138	150m <sup>2</sup>	2x20W	3.6kg	360x646x100







DISTRIBUTED BY



[www.airventventilation.co.uk](http://www.airventventilation.co.uk)

