

Sunhouse



issue five

**space
heating**

Sunhouse

Sunhouse is a long established brand of heating products that has always given exceptional quality and reliability for the best value!

Our range combines innovation and style to deliver high specification electric heating solutions for all applications

index

Electric storage heaters	4
Electric panel heaters	6
Downflow heater	10
Tubular heaters	12
Towel warmers	14
Base unit heater	16





Lot 20

is changing the electric heating market as you know it...



**Ecodesign
Compliant**

What is Lot 20?

Lot 20 states that all local space heaters manufactured for sale after 1st January 2018 which use electricity must comply with a minimum efficiency standard.

The aim of this legislation is to rule out inefficient technologies and reduce the energy used by the products that heat our homes, helping to achieve our overall carbon reduction targets.

This includes:

- Storage heaters
- Direct acting heaters
- Portable heaters
- Radiant heaters
- Electric fires

This does not include:

- Local space heaters using a vapour compression cycle (heat pumps)
- Local space heaters that are specified for outdoor use only
- Tubular heaters
- Towel rails
- Frost protection heaters

What is the Ecodesign Directive?

This is the legalisation that Lot 20 comes from. The EcoDesign Directive sets mandatory minimum specification requirements for many different product groups. It aims to deliver more energy efficient products to reduce energy and resource consumption.

It provides EU-wide rules putting a duty of care on manufacturers to improve the environmental performance of their products. It will also mean that the products that they are unable to improve in terms of energy efficiency cannot be placed on the market, removing inefficient and poorly designed products.

Previous categories updated include:

- Lightbulbs
- TVs
- Domestic appliances - dishwashers, washing machines, tumble driers
- Gas boilers

Electric storage heaters

One of the most economical and stable heating solutions available, the Sunhouse range of storage heaters is as modern today as it was when we first launched the range. Sunhouse storage heaters are styled to suite all modern day domestic and commercial applications.

Furthermore, the slim design, as well as the low profile feet, allow the heaters to stand out for style, yet still discreetly complement any room. Features of the range allow you to select from Mini Automatic, Automatic, through to our highly recommended Combi, all of which match our stylish Sunhouse panel heater range.



An advanced electric storage heater with a clean look and reliable performance. SSHE storage heaters provide an upgraded and compliant replacement for older storage heaters.

- Complies with Lot20 of ERP Directive
- Programmable room temperature with 7 day timer
- Efficient heating system with low running costs delivered by maximising the use of off-peak tariffs
- Dynamically stores the right amount of energy to heat a room
- Controllable electronic heat output to match user lifestyle
- Fan assisted to quickly, quietly and more effectively distribute heat
- Colour: White (RAL 9016) 'Traffic White'. Grill RAL7035 anodised
- 2 year warranty
- Approvals: CE, BEAB
- IPX4

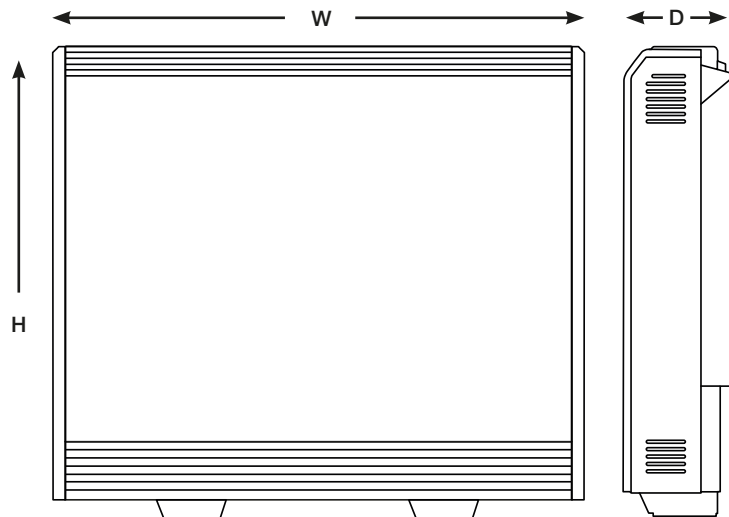
Requires Energy Cell Packs to function. Item: 047243 (included with purchase)

- SSHE050 0.5kW
- SSHE070 0.7kW
- SSHE100 1.0kW
- SSHE125 1.25kW
- SSHE150 1.5kW



Model No.	Wattage	Dimensions (mm)	Weight (Kg)
SSHE050	0.5kW	H749 x W581 x D182	23
SSHE070	0.7kW	H749 x W703 x D182	26
SSHE100	1.0kW	H749 x W823 x D182	28
SSHE125	1.25kW	H749 x W947 x D182	34
SSHE150	1.5kW	H749 x W1069 x D182	36

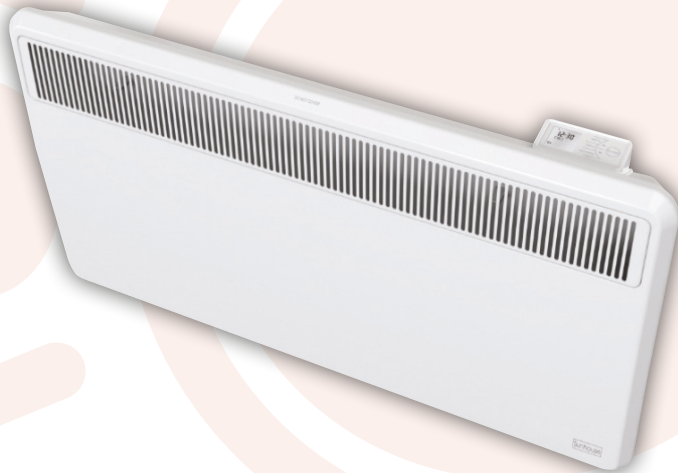
Output	SSHE050	SSHE070	SSHE100	SSHE125	SSHE150
Input Rating +5%/-10%	1020W	1560W	2220W	2760W	3300W
Output Rating	500W	700W	1000W	1250W	1500W
Boost Mode Rating	340W	520W	740W	920W	1100W
Max. Storage Capacity	7140	10920	15540	19320	23100



Electric panel heaters

The Sunhouse panel heater offers variety, style and uncompromised quality. The Eco and Electronic heaters can be used in most modern applications covering both the domestic and light commercial markets.

The Sunhouse Eco panel heater offers a range of benefits. From simple installation using a bracket that allows the product to be tilted forwards for cleaning and decorating, to its ultra-reliable build quality and efficient controls, these heaters are the benchmark for quality and value in the electric panel heater market.



Panel convector heater with thermostat control, integral 7-day timer and adaptive-start.

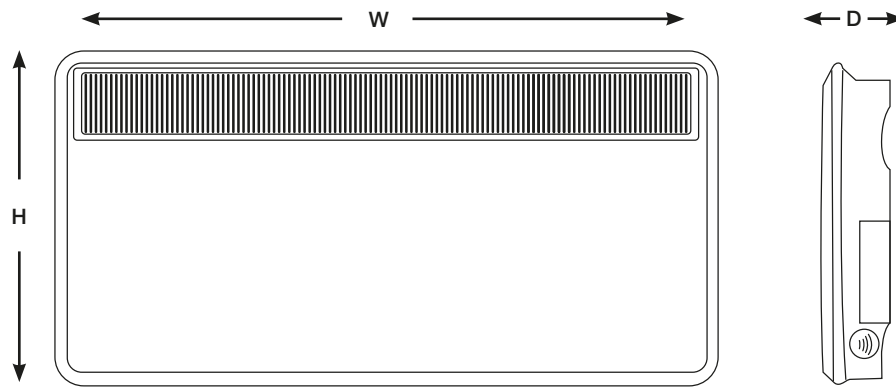
- Complies with Lot 20 of ERP Directive
- Forward-facing, slotted grille for optimum heat circulation
- Aesthetics to complement storage heater ranges Electronic thermostat control provides room temperature stability to $\pm 0.2^{\circ}\text{C}$
- Splash-proof for use in bathrooms
- Suitable for domestic or commercial use
- Hinge down mounting bracket that allows the unit to be tilted for ease of cleaning and decorating
- Colour: Willow white
- 1 year warranty
- IP24

- SPHN50E 0.5kW
- SPHN100E 1.0kW
- SPHN150E 1.5kW
- SPHN200E 2.0kW





Model No.	Wattage	Dimensions (mm)	Weight (Kg)
SPHN50E	0.5kW	H430 x W450 x D108	4.6
SPHN100E	1.0kW	H430 x W620 x D108	5.9
SPHN150E	1.5kW	H430 x W690 x D108	6.1
SPHN200E	2.0kW	H430 x W860 x D108	7.8



Compact Panel Heater

The Sunhouse compact panel heater features an LCD display screen with integrated digitally controlled electronic thermostat with 7-day timer offering the ability to program 4 independent schedules per day.

The timer features an adaptive start timer setting, a self-learning feature that pre-heats the room ahead of a programmed heating schedule for only exactly the amount of time required so it is at the right temperature at the start of the schedule. In addition, the electronic thermostat allows the desired temperature to be set to within 1 degree Celsius and includes a setting to help protect against frost conditions (Adjustable max SP range 5-30°C).



The SPH features intuitive user controls, with LCD display and 7-day programmable timer.

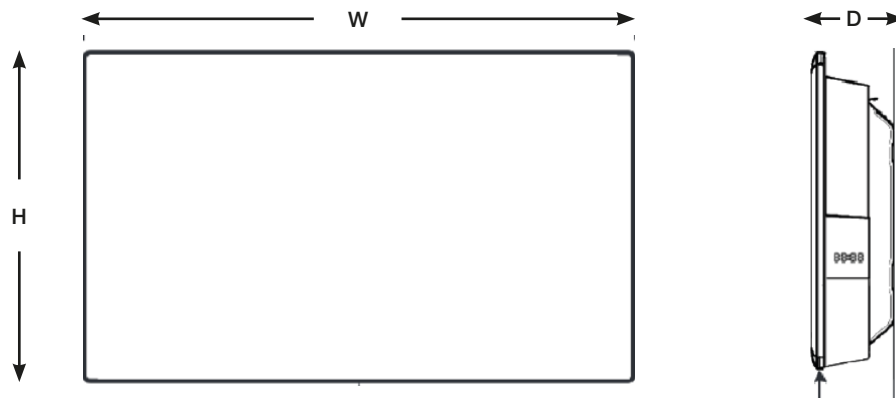
- Complies with Lot 20 of ERP Directive
- Intuitive user controls with LCD display
- 7 Day programmable timer
- Electronic thermostat
- Features energy-saving Adaptive start technology
- Colour: Traffic white
- 2 year warranty
- IP20

- SPH50	0.5kW
- SPH100	1.0kW
- SPH150	1.5kW
- SPH200	2.0kW





Model No.	Wattage	Dimensions (mm)	Weight (Kg)
SPH50	0.5kW	H440 x W450 x D140	3.4
SPH100	1.0kW	H440 x W550 x D140	4.3
SPH150	1.5kW	H440 x W650 x D140	4.9
SPH200	2.0kW	H440 x W950 x D140	7.5



Downflow heater

Sunhouse offers versatility, quality and style all in one great package, the **SDF2E** 2kW Downflow heater. This highly featured heater incorporates an energy saving thermostat which switches output down to 1kW once the room is up to temperature.

Without compromising style, our Sunhouse Downflow heater offers the user an economical way of getting heat fast, all at the pull of a cord in any bathroom, shower room, kitchen, storeroom or garage.



Installed fan heater designed for high level mounting, providing rapid warm up.

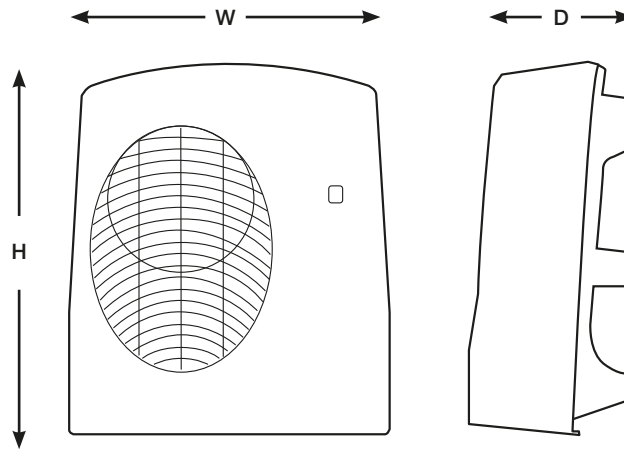
- Complies with Lot 20 of ERP Directive
- Stylish compact design
- Powerful 2kW fan heater
- Pre-set step down thermostat to 1kW
- Factory-set 30 minute runback for ease of use & energy savings Ideal for a variety of locations
- Pull cord on/off switch
- Pilot light indication
- Automatic overheat safety cut out Thermal link overheat protection Colour: White plastic case
- 2 year warranty
- Approvals: CE, BEAB
- IP22

- SDF2E 2kW





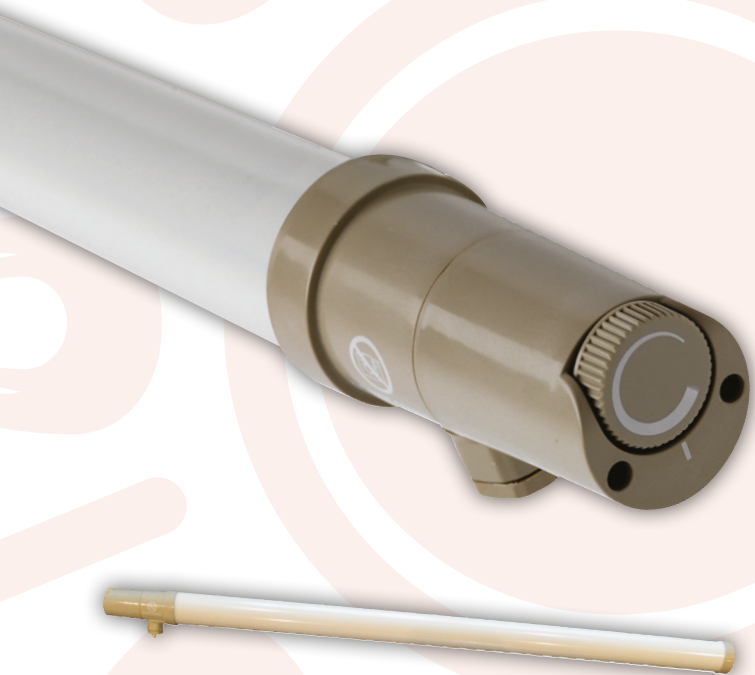
Model No.	Wattage	Dimensions (mm)	Weight (Kg)
SDF2E	2kW	H242 x W229 x D109	1.1



Fully thermostatic tubular heaters

The most discreet heating solution that Sunhouse can offer, this range comes in a variety of sizes and wattages. Its slim and efficient design can be used in small rooms and airing cupboards as well as being a good commercial window demister.

The IPX4 rating also provides great frost protection for greenhouses and other covered outdoor areas. Now fully thermostatically controlled, our Sunhouse Tubular Heaters offer an all-round economical solution for a wide range of applicators.



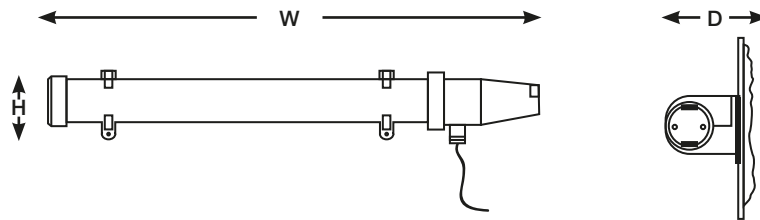
Low output, adjustable heat source suitable for a huge range of applications, from airing cupboards to shop windows and greenhouses

- 1.5m supply cable fitted with plug
- Built in, auto-reset safety cut-out
- Low output with adjustable heat source
- Fully splash-proof
- Discreet mounting brackets for walls or floors
- Reversible left or right hand cable entry
- Adjustable thermostat allowing frost protection and output selection
- Colour: White/grey
- 1 year warranty
- IPX4

- SHTTH1	40W
- SHTTH2	80W
- SHTTH3	120W
- SHTTH4	160W
- SHTTH5	200W
- SHTTH6	240W



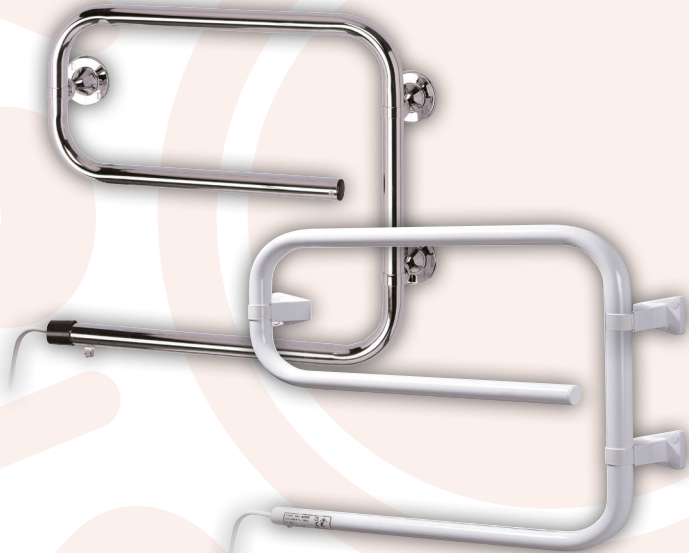
Model No.	Wattage	Dimensions (mm)	Weight (Kg)
SHTTH1	40W	H81 x W408 x D80	0.5
SHTTH2	80W	H81 x W713 x D80	0.6
SHTTH3	120W	H81 x W1018 x D80	0.8
SHTTH4	160W	H81 x W1323 x D80	1.0
SHTTH5	200W	H81 x W1630 x D80	1.1
SHTTH6	240W	H81 x W1933 x D80	1.3
052544	Tubular Linking Kit		



Towel warmers

On hand when you need it, the Sunhouse beautifully styled Towel Warmers are designed to suit all domestic and light commercial applications. Furthermore, we have taken a great deal of time to ensure the low wattage in both white and chrome models dries and warms towels economically and quickly.

This stylish, yet compact wall mountable Sunhouse product, has all the qualities you would want in your bathroom, where a fluffy warm towel is expected.

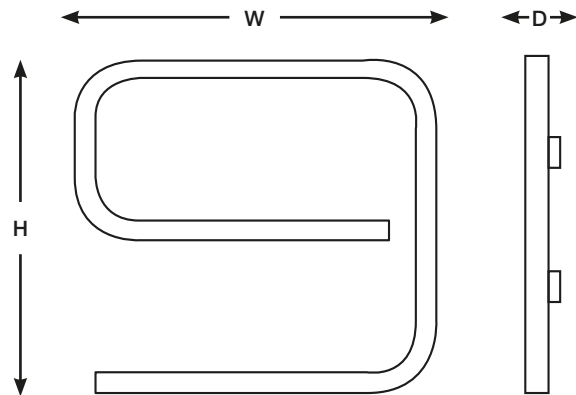


- Suitable for the bathroom, shower room or kitchen
- Supplied with mains cable and mounting brackets
- Easy and fast installation Dry-element tubular-steel towel rail Reversible cable entry point
- Splash-proof (IPX4 rated) for bathrooms
- Choice of white (W) or chrome (C) finish
- 2 year warranty Approvals: CE, BEAB IPX4

- STR50W 50W
- STR50C 50W



Model No.	Wattage	Dimensions (mm)
STR50W	50W	H635 x W460 x D115
STR50C	50W	H635 x W460 x D115



Base unit heater

The Sunhouse style clearly stands out with this neatly designed, fit for purpose and unobtrusive base unit heater. These heaters are ideal for most domestic and light commercial applications, where heating is required at plinth level in kitchens, bedrooms, workstations or shop display units.

SB2TSE features a seven-day timer with electronic thermostat. This heater fits into the plinth space under cabinets in rooms with wall space restrictions

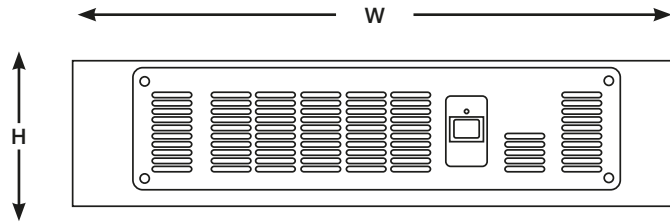


- Complies with Lot 20 of ERP Directive
- User programmable room temperatures with seven-day timer, controlled via Bluetooth remote
- Accurate electronic thermostat
- Features energy-saving technology Adaptive Start
- Same size and fixings as older Sunhouse SB2TS heaters
- Forward facing grille with fan-assisted output for optimum heat circulation
- Colour: Traffic white
- 2 year warranty

- **SB2TSE** 2kW



Model No.	Wattage	Dimensions (mm)	Weight (Kg)
SB2TSE	2.0kW	H88 x W368 x D203	1.5



Sunhouse

DISTRIBUTED BY



www.sunhouse.co.uk

'Terms of Business' applies, a copy of which is available on request. Contact your local branch for details.
E&OE - Although we strive to keep this document as accurate as possible, we cannot be held responsible for any errors and omissions.

12589 WK04/2023