

**STEARN**

Your Other Warehouse

**100** *years*  
1924 - 2024



FOR ALL YOUR  
AIR TREATMENT  
NEEDS



easyfit

SUPER Inverter

WIFI Control

works with amazon alexa

works with the Google Assistant

R32

+19°C  
-10°C



**LUX AIR**  
exclusively from  
airconditioningcentre

easyfit SUPER Inverter TOSHIBA COMPRESSOR



**GLOSS WHITE SUPER INVERTER WALL SPLIT SYSTEMS**      **SUPER INVERTER CEILING CASSETTE SYSTEMS**

Cat No.	GLOSS WHITE SUPER INVERTER WALL SPLIT SYSTEMS				SUPER INVERTER CEILING CASSETTE SYSTEMS		
	TOSHIBA	TOSHIBA	SANYO	TOSHIBA	TOSHIBA	TOSHIBA	TOSHIBA
KFR23IW/LUX	KFR33IW/LUX	KFR53IW/LUX	KFR63IW/LUX	KFR50QIW/X1CM	KFR74QIW/X1CM	KFR120QIW/X1CM	
Energy Efficiency Rating Cooling	A++	A++	A++	A++	A+	A+	A
Energy Efficiency Rating Heating	A+++	A+++	A+++	A+++	A+	A+	A
Power Rating (Ph-V-Hz)	1 / 220-240V / 50Hz	1 / 220-240V / 50Hz	1 / 220-240V / 50Hz	1 / 220-240V / 50Hz	1 / 220-240V / 50Hz	1 / 220-240V / 50Hz	1 / 220-240V / 50Hz
Capacity BTU Cooling kW (Max kW)	9000 / 2.7 (2.8)	12000 / 3.5 (3.7)	18000 / 5.0 (5.2)	24000 / 7.1 (7.8)	17000 / 5.0	24000 / 7.3	36000 / 10.5
Capacity BTU Heating kW (Max kW)	9000 / 2.7 (2.8)	12000 / 3.5 (3.8)	18000 / 5.0 (5.3)	24000 / 7.1 (8.2)	18000 / 5.3	26000 / 8.0	40000 / 11.2
Power Input (W) Cooling/Heating	750-680 (1.3)	1190-950 (1.6)	1550-1345 (2.4)	2300-2200 (3.3)	1550-1460	2180-2100	3230-3250
Current Input (A) Cooling/Heating	3.5-3.1	4.9-4.5	6.8-5.9	10.6-10.1	7.1-6.7	10.0-9.6	16.8-16.8
EER (BTU/hr.w)	SEER 6.1	SEER 6.1	SEER 6.1	SEER 6.1	5.6	6.5	5.6
CDP (W/W)	SCOP 4.0	SCOP 4.0	SCOP 4.0	SCOP 4.0	3.8	3.8	3.8
Dehumidification (L/h)	0.9	1.1	1.4	2.2	1.7	2.6	3.5
Indoor Noise Level dB(A) (Hi/M/Lo)	34-40	36-42	35-44	37-46	42	43	48
Outdoor Noise Level dB(A)	52	52	54	59	51	54	55
Indoor Airflow (m3/h) (Hi/M/Lo)	350/400/450/500	400/450/500/500	520/620/720/820	800/900/1050/1200	800 max	1780 max	1850 max
Max. Current Rating (A)	7	8	11	13	8	11	12
Net Dimension (mm) indoor (W/D/H)	720x270x196	790x270x200	900x291x220	1025x235x320	570x570x260	840x840x245	840x840x245
Net Dimension (mm) outdoor (W/D/H)	665x260x530	665x260x530	780x270x560	820x310x635	760x590x285	845x895x335	990x966x354
Net/Gross Weight (kg) indoor	7.5	9	10	11	18	24	27
Net/Gross Weight (kg) outdoor	21.8	23.3	30.5	36.7	52/57	53	82
Max Room Size (m²)	13-25	16-30	25-45	34-60	25-45	34-60	50-100
Max Conservatory Size (m²)	12	15	25	30	N/A	N/A	N/A
Connecting Pipe Length (m)	4	4	4	6	5	6	6
Pipe Diameter Liquid/Gas (Inch)	1/4 & 3/8	1/4 & 3/8	1/4 & 1/2	3/8 & 5/8	1/4 & 1/2	3/8 & 5/8	3/8 & 5/8
Selectable Temp Range °C	16-32	16-32	16-32	16-32	17-30	17-30	17-30
Minimum Operating Temp (Cooling/Heating) °C	-15 / 52	-15 / 52	-15 / 52	-15 / 52	-7 / -15	-7 / -15	-10 / -15
Automatic Restart after Power Failure	Yes	Yes	Yes	Yes	Yes	Yes	Yes
Automatic Refrigerant Leak Detection & Self Diagnosis Systems	Yes	Yes	Yes	Yes	Yes	Yes	Yes

\*These systems MUST be installed by a qualified FGAS registered engineer

# Multi Split Systems - Mix & Match

easyfit SUPER Inverter



Cat No.	SUPER INVERTER MULTI SYSTEM OUTDOOR UNITS		WALL SPLIT INDOOR			CEILING CASSETTE INDOOR	CONSOLE INDOOR	
	KMS4MIO/X1CM	KMS5MIO/X1CM	KFR23IW/X1CMIU	KFR33IW/X1CMIU	KFR53IW/X1CMIU	KFR50QIW/X1CMIU	KFR37CIW/X1CMIU	KFR57CIW/X1CMIU
Energy Efficiency Rating Cooling	A++	A++	A++	A++	A++	A+	A++	A++
Energy Efficiency Rating Heating	A+++	A+++	A+++	A+++	A+++	A+	A+++	A+++
Power Rating (Ph-V-Hz)	1 / 220-240V / 50Hz	1 / 220-240V / 50Hz	1 / 220-240V / 50Hz	1 / 220-240V / 50Hz	1 / 220-240V / 50Hz	1 / 220-240V / 50Hz	1 / 220-240V / 50Hz	1 / 220-240V / 50Hz
Capacity BTU/H (cooling) kW	36000 / 10.55 (12.0)	42000 / 12.31 (14.0)	9000 / 2.7	11000 / 3.2	17000 / 5.0	17000 / 5.0	12000 / 3.5	17000 / 5.0
Capacity BTU/H (heating) kW	38000 / 11.14 (13.0)	43000 / 12.60 (15.0)	9000 / 2.8	11000 / 3.4	18000 / 5.1	18000 / 5.3	13000 / 3.6	18000 / 5.3
Power Input (W) Cooling/Heating	3620-3170 (4.5)	3820-3310 (5.0)	N/A	N/A	N/A	N/A	N/A	N/A
Current Input (A) Cooling/Heating	12.7-12.9	14.6-15.3	N/A	N/A	N/A	N/A	N/A	N/A
EER (BTU/hr.w)	SEER 6	SEER 5.3	N/A	N/A	N/A	N/A	N/A	N/A
CDP (W/W)	SCOP 3.6	SCOP 3.4	N/A	N/A	N/A	N/A	N/A	N/A
Dehumidification (L/h)	N/A	N/A	1	1.1	1.7	1.7	1.1	1.7
Indoor Noise Level dB(A) (Hi/M/Lo)	N/A	N/A	36/32/28	42/35/29	46/42/36	42	47	48
Outdoor Noise Level dB(A)	63	65	N/A	N/A	N/A	N/A	N/A	N/A
Indoor Airflow (m3/h) Hi/M/Lo	N/A	N/A	400/350/320	500/400/350	730/680/560	800 max	700 max	740 max
Max. Current Rating (A)	20	22	N/A	N/A	N/A	N/A	N/A	N/A
Fuse Rating (type D)								
Net Dimension (mm) indoor (W/D/H)	N/A	N/A	710x189x250	790x196x275	930x189x275	570x570x260	700x210x600	700x210x600
Net Dimension (mm) outdoor (W/D/H)	946x410x810	946x410x810	N/A	N/A	N/A	N/A	N/A	N/A
Net/Gross Weight (kg) indoor	N/A	N/A	6.5	8	9	18	15	15
Net/Gross Weight (kg) outdoor	70	76	N/A	N/A	N/A	N/A	N/A	N/A
Max Room Size (m²)	N/A	N/A	13-22	16-27	25-42	25-45	16-27	25-42
Max Conservatory Size (m²)	N/A	N/A	10	13	22	N/A	12	20
Connecting Pipe Length (m)	N/A	N/A	Order Separately	Order Separately	Order Separately	Order Separately	Order Separately	Order Separately
Pipe Diameter Liquid/Gas (Inch)	3 Sets of 1/4 & 3/8 1 Set of 1/4 & 1/2	3 Sets of 1/4 & 3/8 2 Sets of 1/4 & 1/2	1/4 & 3/8	1/4 & 3/8	1/4 & 1/2	1/4 & 1/2	1/4 & 3/8	1/4 & 1/2
Selectable Temp Range °C	N/A	N/A	17-30	17-30	17-30	17-30	17-30	17-30
Minimum Operating Temp (Cooling/Heating) °C	-15	-15	-7 / -15	-7 / -15	-7 / -15	-7 / -15	-7 / -15	-7 / -15
Automatic Restart after Power Failure	Yes	Yes	Yes	Yes	Yes	Yes	Yes	Yes
Automatic Refrigerant Leak Detection & Self Diagnosis Systems	Yes	Yes	Yes	Yes	Yes	Yes	Yes	Yes

\*These systems MUST be installed by a qualified FGAS registered engineer



**DON'T FORGET BRACKETS**

Wall Mounting Kits for Outdoor Units	
Cat No.	Units
BRKTUNI2356	KFR 23/33/50/51/53
BRKTUNI63120KMS	KFR 63/66/70/74/120



**airconditioningcentre®**

**easyfit™**



**easyfit™**

**SUPER Inverter TOSHIBA COMPRESSOR**



**easyfit™ SUPER Inverter R32**



CONSOLE SYSTEM	SUPER INVERTER LOW WALL SYSTEM		GLOSS BLACK SUPER INVERTER WALL SPLIT SYSTEMS			
			TOSHIBA TECHNOLOGIES	TOSHIBA TECHNOLOGIES	SANYO TECHNOLOGIES	TOSHIBA TECHNOLOGIES
<b>KFR37CIW/X1CM</b>	<b>KFR55LIW/X1CM</b>	<b>KFR75LIW/X1CM</b>	<b>KFR26YW/LUX</b>	<b>KFR36YW/LUX</b>	<b>KFR56YW/LUX</b>	<b>KFR66YW/LUX</b>
A++	A+	A+	A++	A++	A++	A++
A+++	A+	A+	A+++	A+++	A+++	A+++
1 / 220-240V / 50Hz	1 / 220-240V / 50Hz	1 / 220-240V / 50Hz	1 / 220-240V / 50Hz	1 / 220-240V / 50Hz	1 / 220-240V / 50Hz	1 / 220-240V / 50Hz
12000 / 3.5	18000 / 5.3	24000 / 7.3	9000 / 2.7 (2.8)	12000 / 3.5 (3.7)	18000 / 5.0 (5.2)	24000 / 7.1 (7.8)
13000 / 3.6	18000 / 5.3	26000 / 8.0	9000 / 2.7 (2.8)	12000 / 3.5 (3.8)	18000 / 5.0 (5.3)	24000 / 7.1 (8.2)
1090-970	1620-1410	2190-2050	750-680 (1.3)	1190-950 (1.6)	1550-1345 (2.4)	2300-2200 (3.3)
5-4.5	7.4-6.5	10.02-9.38	3.5-3.1	4.9-4.5	6.8-5.9	10.6-10.1
6.2	SEER 6.2	SEER 6.6	SEER 6.1	SEER 6.1	SEER 6.1	SEER 6.1
3.8	3.8	SCOP 3.8	SCOP 4.0	SCOP 4.0	SCOP 4.0	SCOP 4.0
1.1	2.5	2.6	0.9	1.1	1.4	2.2
47	42	53/50/47	34-40	36-42	35-44	37-46
51	51	63	52	52	54	59
700 max	900 max	1400/1250/1100	350/400/450/500	400/450/500/550	520/620/720/820	800/900/1050/1200
7	8	13	7	8	11	13
700x210x600	1068x235x675	1068x235x675	720x270x196	790x270x200	900x291x220	1025x235x320
780x250x547	845x320x700	900x315x860	665x260x530	665x260x530	780x270x560	820x310x635
15	25	25	7.5	9	10	14
34	40	59	21.8	23.3	30.5	36.7
16-27	25-45	34-60	13-25	16-30	25-45	34-60
12	25	30	12	15	25	30
4	5	6	4	4	4	6
1/4 & 1/2	1/4 & 1/2	3/8 & 5/8	1/4 & 3/8	1/4 & 3/8	1/4 & 1/2	3/8 & 5/8
17-30	17-30	17-30	16-32	16-32	16-32	16-32
-7 / -15	-7 / -15	-7 / -15	-15 / 52	-15 / 52	-15 / 52	-15 / 52
Yes	Yes	Yes	Yes	Yes	Yes	Yes
Yes	Yes	Yes	Yes	Yes	Yes	Yes

\*These systems MUST be installed by a qualified FGAS registered engineer



The iPAC range of stand-alone, light industrial portable air conditioning units are a great option for a flexible cooling and heating solution with WIFI control.

The iPAC Industrial Portable Air Conditioning Units come complete with Cooling, Heating and Dehumidifying functions for all year-round use.

The ducted exhaust hose is included with the system to vent the hot air to the outside of the building along with an adjustable window mounting panel for a quick and easy set up. Our portable air conditioning units benefit from an automatic inbuilt water wheel, and can condense the water out with the exhaust air, so there is generally no need to empty the water tank (except in extremely humid conditions).

The iPAC range is suitable for:

- Warehouses, Workshops & Factories
- Commercial Kitchens
- Hospitals & Laboratories
- Emergency cooling & server rooms
- Marquee events
- Temporary office cooling
- Equipment spot cooling
- Military use, tents, aircraft hangars
- Versatile Unit Heats, Cools and Dehumidifies
- Auto-Restart after Power Outage
- Automatic Self Evaporating System\*
- Auto-Stop when Water Tank Full
- Remote Control
- Designed to Run Continuously
- 3 Fan Speeds for Cooling\*\*
- WiFi Control with Smart Life App

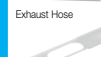
These are unique and versatile units allowing ducting to be fitted on both cold air and exhaust air outlets at the same time.

Cat No.	IPAC-40	IPAC-55	IPAC-70	IPAC-95
Power Rating (Ph/W/Hz)	1/220-240V/50Hz	1/220-240V/50Hz	1/220-240V/50Hz	1/220-240V/50Hz
Capacity BTU/h (cooling)	14000 (4.0kW)	18000 (5.1kW)	24000 (7.0kW)	30000 (8.8kW)
Capacity BTU/h (heating)	14000 (4.0kW)	16000 (4.7kW)	24000 (7.0kW)	29000 (8.5kW)
Power Input W (C/H)	1535/1920	1585/1970	2500/1800	2100/2050
Current Input A (C/H)	7.6	7.6	10.2	13.0
Noise dB(A)	65	65	65	65
Dehumidification (L/Day)	70	80	120	130
Airflow (m3/h)	450	450	950	1050
Timer setting (Hrs)	0-24	0-12	0-24	0-12
Net Dimension (mm) H/W/D	778x300x500	778x505x300	1204x574x708	1140x540x695
Net Weight (kg)	32.5	33	74	68
Maximum Room Size (m²)	46	52	60	85
Exhaust Hose Length	1.5m	1.5m	1.5m	1.5m
Exhaust Hose Diameter	150mm	150mm	150mm	200mm
Window Extraction Kit	Yes	Yes	Yes	Yes
Front Spigot/ Hose Inc.	Yes	Yes	Yes	No

\*Cooling Only \*\*Heating 1 Speed \*\*\* Optional Extension Available



Comes with:



Remote Control



Cat No. IPAC-95-ACC

Accessory Kit for IPAC-95





# iKOOL<sup>®</sup> Evaporative Coolers

These stand alone, quiet and reliable units are a great alternative to a fan cooler. Ideal during the warm summer months, they provide a cost effective, efficient and reliable cooling solution for homes and small offices alike.

- Large tank capacity for longer cooling time
- High efficiency pad that cools 30% more than conventional pads
- Powerful air flow for faster cooling and comfort
- Automatic louvers for better air distribution
- Multi directional wheels move effortlessly
- Reliable - Quiet - Efficient - Portable

Also known as Swamp Coolers or Spot Coolers, MasterKool Air Coolers simply use the process of evaporation to create a cool environment, without the need for an expensive air conditioning system. They are simple to use, portable and cheap to run.

Cat No.	IKOOLMINIWH	IKOOLMINIBLK	IKOOLMINIBLU	IKOOLMINIGRN	IKOOLMINIPNK	IKOOL10HOT	IKOOL10PLUS	IKOOL25PLUS	IKOOL50PLUS	IKOOL80PLUS	IKOOL100
Air volume m <sup>3</sup> /hr	165	165	165	165	165	760	760	1432	2410	5500	7000
Cooling Area (approx.) sqm	4	4	4	4	4	10	10	15	25	45	60
Power (W)	12	12	12	12	12	1443	58	62	125	205	320
Heating Power Output (W)	X	X	X	X	X	1100	X	X	X	X	X
Input electricity (W/Hz)	220/50	220/50	220/50	220/50	220/50	220/50	220/50	220/50	220/50	220/50	220/50
Current (A)	0.06	0.06	0.06	0.06	0.06	6.85	0.25	0.29	0.57	1.0	2.0
Noise dB(A)	55.2	55.2	55.2	55.2	55.2	63.3	63.3	64	66	67	68
Water tank capacity (Ltrs)	1.3	1.3	1.3	1.3	1.3	9.3	9.3	13	26	63	93
Water full run time (Hrs)	3-5	3-5	3-5	3-5	3-5	10-13	10-13	10-13	7-11	7-10	10-17
Water evaporation rate (Ltrs/hr)	0.3-0.5	0.3-0.5	0.3-0.5	0.3-0.5	0.3-0.5	0.7-0.9	0.7	0.9-1.2	2.4-4.0	6.0-9.0	5.5-9.3
Fan speeds	2	2	2	2	2	3	3	4	4	4	4
Mosquito repellent	X	X	X	X	X	✓	✓	✓	✓	✓	✓
Timer function	X	X	X	X	X	X	X	✓	✓	✓	✓
Cooling pad grade	5090	5090	5090	5090	5090	5090	5090	4090	5090	5090	5090
No. of cooling pads	1	1	1	1	1	1	1	3	3	3	3
Powered air direction L/R swing	X	X	X	X	X	✓	✓	✓	✓	✓	✓
Vent size (cm)	14x14	14x14	14x14	14x14	14x14	21.5x25	21.5x25	25x32	34x41	45x45	57x57
Cooling pad volume (cm <sup>3</sup> )	490	490	490	490	490	2673	2673	4798	14443	39825	76500
Dimensions HxWxD (mm)	320x170x150	320x170x150	320x170x150	320x170x150	320x170x150	740x280x240	750x280x240	860x320x270	1060x420x365	1250x610x462	1380x870x570
Net Weight (kg)	1.4	1.4	1.4	1.4	1.4	5.9	5.5	8	12	23	42
Direct water connection	X	X	X	X	X	X	X	X	X	✓	✓



## LUX AIR<sup>®</sup> Mobile Air Conditioning Systems

Our high performance portable air conditioners feature heat pump technology\*, enabling units to both heat and cool at the push of a button. Fitted with easy-roll castors they can be conveniently moved from room to room as required. A ducted exhaust hose is included to vent the hot air to the outside of the building. An adjustable window mounting panel is also supplied to attach the exhaust hose for ease of use. Our portable air conditioning units benefit from an automatic inbuilt water wheel, and can condense the water out with the exhaust air whilst in cool mode, so there is generally no need to empty the water tank (except in extremely humid conditions).



Cat No.	KYR25CO/LUX	KYR35GW/LUX*	KYR45GW/LUX*
Energy Efficiency Rating Cooling	A	A	A
Energy Efficiency Rating Heating	N/A	A	A
Power Rating (Ph/V/Hz)	1/220-240V/50Hz	1/220-240V/50Hz	1/220-240V/50Hz
Capacity BTU/h (cooling)	9000 (2.6kW)	12000 (3.5kW)	14000 (4.1kW)
Capacity BTU/h (heating)	COOL ONLY	12700 (3.7kW)	16000 (4.6kW)
Power Input W (C/H)	1000	1350/1391	1538/1520
Current Input A (C/H)	4.2	5.5/6.0	8.4/8.5
EER (BTU/hr.w)	2.93	2.6	2.3
COP (w/w)	N/A	2.3	3.0
Noise dB(A)	56	65	65
Dehumidification (L/h)	0.9	1.2	1.5
Airflow (m <sup>3</sup> /h)	300	380	380
Net Dimension (mm) W/D/H	440x335x715	440x335x715	470x370x764
Net Weight (kg)	31	32	36
Max Room Size	30m sq	35m sq	10-46m sq
Max Conservatory Size	15m sq	20m sq	23m sq
Exhaust Hose Length	1.5m	1.5m	1.5m
Exhaust Hose Diameter	150mm	150mm	150mm
Window Extraction Kit	Yes	Yes	Yes



**Cat No. KYR-WKBAG**  
**Universal Bag-Type window kit**  
 Suitable for all windows, the kit secures around the edge using a hook and loop design (all included in the kit). It features 1 Zipper with 2 sliders to secure the exhaust hose between. \*If you have an abnormal shape or very large window please call to check first.

Cat No.	KYREXT1.5M	KYR-55EXT1.5M
1.5m Exhaust hose extension		



# DLUX® Dehumidifiers Intelligent Dehumidifiers

The DLUX Range of Intelligent Dehumidifiers are capable of removing moisture in damp rooms. Featuring a Special Laundry Mode, perfect for drying clothes indoors through the colder months. With an LED Screen for simple selection of the desired humidity level, allowing for easy operation. These Compressor driven models offer a cost-efficient solution to dry-out damp areas or clothes, and are cheaper to run than desiccant types.

Our easy-to-use Touch Panel design displays the current humidity and the desired humidity. With its built-in Humidistat this system will control the humidity accurately. Condensed water will be collected in the large internal water tank, which is removable for easy emptying. Alternatively, this dehumidifier can also be connected to a continuous drain using the included 1m drain hose. For drying over a long period of time the DLUX Dehumidifier Range also features a 12-hour delay timer (either on or off), offering an autonomous aspect to the system. Easy-roll castors and robust grab handle allow this system to be easily moved from room to room as desired. The DLUX Range feature a washable Dust Filter to remove large dust particles from the air, so the air coming out is always cleaner and dust free.

Cat No.	DLUX-12	DLUX-20
Moisture Removal (L/24Hr)	12	20
Water Tank Size (L)	2L	6L
Max Room Size SqM	55	85
Air Volume m³/h	Dehumidify mode	130
	Laundry mode	138
	Fan mode	N/A
Max Sound Level dB(A)	High Speed	42
	Low Speed	40
Power Input (Watts)	280W	350W
Current Input (Amp)	1.6A	2.2A
Refrigerant	R290	R290
Humidistat/Sensor	Yes	Yes
Control Panel with LCD Display	Yes	Yes
Water Full Alarm	Yes	Yes
Dehumidify Mode	Yes	Yes
Laundry Mode	Yes	Yes
Fan Speeds	2	2
Anti-Dust Filter (Washable)	Yes	Yes
Continuous Drain	Yes	Yes
Programmable 24 Hour Timer	Yes	Yes
Child lock	No	Yes
Auto Swing	No	Yes
Plug	13 Amp 3 Pin BS	13 Amp 3 Pin BS
Certification	CE, GS, ROHS, REACH, UKCA	CE, GS, ROHS, REACH, UKCA
Power Cable Length	1.8m	1.8m
Drain Hose Length	1m	1m
Wheels	Yes	Yes
Net Dimensions (WxDxH (mm))	282x204x430	371x251x595
Net Weight	10kg	13.3kg

The DLUX-12 compressor driven model offers a cost-efficient solution to drying damp areas and clothes, using only 280W of power it is much more economical than a tumble dryer, and won't shrink your delicates!



The DLUX-20 larger compressor driven model offers a cost-efficient solution to drying damp areas and clothes, using only 350W of power it is much more economical than a tumble dryer. Ideal for larger areas and clothes drying!



## Medical Grade Air Purifiers

Air Purity • Clean Workplace • Clean Home • Safer for your staff and family



### Features:

- Active UV-C Sterilisation
- 8 Stage Purification System
- High ION Output 24m/Sec
- IONIC KILLS VIRUSES
- ION's to Re-Energise the Room
- Tuya WiFi APP Controllable/BMS
- Alexa & Google Controllable
- SMART Auto Clean Mode
- Super Slim 12cm Design
- Patented Multi-Fan Design
- Wall Mount or Floor Standing
- Child Lock for Safety

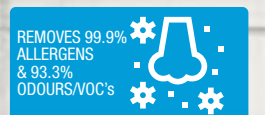
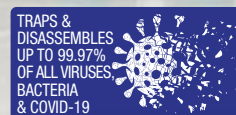
Cat No.	AXP200	AXP400	AXP800	AXP1200	AXP1600
Power 220-240V 50Hz	22W	40W	75W	110W	140W
Energy Efficiency Rating	A+++	A+++	A+++	A+++	A+++
PM2.5 Removal Rate	99.97%	99.97%	99.97%	99.97%	99.97%
Max Room Size (m²)	25	65	130	180	240
Air Flow (m³/h)	200	380	720	1100	1500
Solid State CADR	122cfm	224cfm	424cfm	647cfm	882cfm
Laser Particulate Sensor	Yes	Yes	Yes	Yes	Yes
Fan Speeds	4	4	4	4	4
Remote Control	Yes	Yes	Yes	Yes	Yes
WiFi Control	Yes	Yes	Yes	Yes	Yes
APP Smart Control	Tuya	Tuya	Tuya	Tuya	Tuya
Negative ION's Generated	>24 Million/sec	>24 Million/sec	>24 Million/sec	>24 Million/sec	>24 Million/sec
Anion Function	Yes	Yes	Yes	Yes	Yes
Sleep Mode	Yes	Yes	Yes	Yes	Yes
Smart Clean Air Mode	Yes	Yes	Yes	Yes	Yes
Timer Function	Yes (1/2/4/8Hrs)	Yes (1/2/4/8Hrs)	Yes (1/2/4/8Hrs)	Yes (1/2/4/8Hrs)	Yes (1/2/4/8Hrs)
Child Lock	Yes	Yes	Yes	Yes	Yes
Noise Level dB(A)	33.9-47.4	34.2-54.9	34.8-59.8	35.1-63.0	35.3-63.5
Number of DC Fan Motors	2	4	8	12	16
Digital Filter Life Countdown (1500Hrs)	Yes	Yes	Yes	Yes	Yes
Wall Mount or Floor Standing	Yes	Yes	Yes	Yes	Yes
Unit Dimensions (WxDxHmm)	430x127x520	430x127x720	430x127x1021	430x127x1413	430x127x1806
Net Weight (kg)	5.8	8.5	13.5	19.5	25



Optional Glass Base (AXP-BASE) illustrated

### Accessories

Cat No.	AXPBASE	AXPUVLAMP2	AXP200FIL2	AXP400FIL2	AXP800FIL2	AXP1200FIL2	AXP1600FIL2
Description	Glass Base	UV Lamp Universal	Filter Pack for AXP200	Filter Pack for AXP400	Filter Pack for AXP800	Filter Pack for AXP1200	Filter Pack for AXP1600
	Option AXP1200 & AXP1600 to floor stand	2 packs required for AXP1200 & AXP1600	Twin pack gives 3000hrs	Twin pack gives 3000hrs	Twin pack gives 3000hrs	Twin pack gives 3000hrs	Twin pack gives 3000hrs



# PureDri

Continuously sanitises  
air & surfaces

Economic hand dryer

Eliminates unpleasant odours

Focused sanitising for users

Exceptional energy efficiency

UTILISING BEST-IN-CLASS SANITISING TECHNOLOGY THE PUREDRI PROVIDES A TRIPLE ACTION DEFENCE AGAINST THE SPREAD OF BACTERIA, MOULD, VIRUSES AND ODOURS IN WASHROOMS.

The PureDri station will substantially reduce contamination risk whilst creating cleaner, fresher smelling and more sustainable washroom environments.

Annual running cost £65

Cat No.	Description	5 YEAR WARRANTY
PHJ0100A9WHT	White	

## ECO & CLASSIC HAND DRYERS FROM AIRDRI COME WITH A 7 YEAR WARRANTY



7 YEAR WARRANTY

QUANTUM

Dimensions	W219xH274 xD98mm
Dry speed (secs)	12
Noise level (dBA)	85 dBA
Nominal output KW @ 230V	0.2
Annual running cost	£10

Cat No.	Description
HDJ0100A9SS	Brushed



7 YEAR WARRANTY

DECO

Dimensions	W294xH342 xD100mm
Dry speed (secs)	12
Noise level (dBA)	85 dBA
Nominal output KW @ 230V	0.2
Annual running cost	£10

Cat No.	Description
HDJ0200A9SSB	Brushed



7 YEAR WARRANTY

QUAZAR

Dimensions	W258xH350 xD100mm
Dry speed (secs)	17
Noise level (dBA)	70 dBA
Nominal output KW @ 230V	1
Annual running cost	£69

Cat No.	Description
HDH0600A0WHT	White
HDH0600A0BLK	Black
HDH0600A0CHR	Chrome



7 YEAR WARRANTY

QUEST

Dimensions	W266xH308 xD187mm
Dry speed (secs)	15
Noise level (dBA)	72 dBA
Nominal output KW @ 230V	0.95
Annual running cost	£58

Cat No.	Description
HDA0506A0WHT	White
HDA0506A0BLK	Black
HDA0506A0CHR	Chrome



7 YEAR WARRANTY

KIDDI QUAD

Dimensions	W350xH345 xD100mm
Dry speed (secs)	15-20
Noise level (dBA)	71 dBA
Nominal output KW @ 230V	1.7
Annual running cost	£117

Cat No.	Description
HDH0314C0GRL	Girl
HDH0314C0BOY	Boy
HDH0314C0WHL	Disabled



7 YEAR WARRANTY

QUAD

Dimensions	W350xH345 xD100mm
Dry speed (secs)	15-20
Noise level (dBA)	71 dBA
Nominal output KW @ 230V	1.7
Annual running cost	£117

Cat No.	Description
HDH0308C0MSW	White
HDH0308C0SSB	Brushed



7 YEAR WARRANTY

QUARTZ

Dimensions	W348xH260 xD185mm
Dry speed (secs)	15
Noise level (dBA)	72 dBA
Nominal output KW @ 230V	1.4
Annual running cost	£85

Cat No.	Description	Net Price
HDA0408B0WHT	White	£225.33
HDA0408B0CHR	Chrome	£225.33



7 YEAR WARRANTY

QUARTO

Dimensions	W348xH260 xD178mm
Dry speed (secs)	30
Noise level (dBA)	74 dBA
Nominal output KW @ 230V	2
Annual running cost	£243

Cat No.	Description
HDA0308E0WHT	White
HDA0308E0CHR	Chrome



# AIRDRI STERASPACE AIR & SURFACE SANITISERS

## The most advanced virus and bacteria control technology of its kind

- Proven to kill 98.11% of airborne and 99.6% of surface micro-organisms
- Controls infections by killing bacteria, viruses, mould and fungi
- Removes odours, pollen, pollution and smoke
- Provides 24 hour protection, 365 days a year
- Choice of four units to suit all sizes and types of spaces



THE EFFICACY OF STERASPACE DEVICES HAS BEEN TESTED BY UK PUBLIC HEALTH LABORATORIES

- This technology has been proven to kill 98.11% of airborne and 99.6% of surface micro-organisms
- 206% more powerful than chlorine
- Energy Field equals to 10,000 times of natural sunlight
- 157% more powerful than hydrogen peroxide

SteraSpace Air & Surface Sanitisers provide continuous protection from the spread of harmful bacteria, viruses, mould, fungi and odours. The units work by combining three advanced technologies in order to emit a constant flow of disinfecting plasma which is proven to eliminate micro-organisms both in the air and on surfaces.

### STERASPACE WASHROOM



Cat No.	Description
PWA-10TNM	10m <sup>2</sup> Titanium
PWA-10WHT	10m <sup>2</sup> White
PWA-20TNM	20m <sup>2</sup> Titanium
PWA-20WHT	20m <sup>2</sup> White
PWA-30TNM	30m <sup>2</sup> Titanium
PWA-30WHT	30m <sup>2</sup> White

### STERASPACE



Cat No.	Description
PCA-30	30m <sup>2</sup>
PCA-30X	30m <sup>2</sup>
PCA-40X	40m <sup>2</sup>

### STERASPACE 80



Cat No.	Description
PMA-40	40m <sup>2</sup>
PMA-60	60m <sup>2</sup>
PMA-80	80m <sup>2</sup>

### STERASPACE 20



Cat No.	Description
PSA-20	20m <sup>2</sup>

	STERASPACE WASHROOM	STERASPACE	STERASPACE 80	STERASPACE 20
Dimensions (mm)	400mm (h) x 125mm (w) x 90mm (d)	387mm (h) x 132mm (w) x 94mm (d)	430mm (h) x 130mm (w) x 100mm (d)	345mm (h) x 185mm (w) x 95mm (d)
Weight (kg)	0.9kg	1.5kg	2.05kg	1.6kg
Power Supply	220-230V / 10 watts (via 13a switched spur)	220-230V 11.5-13 watts	220-230V / 33 watts	220-230V / 18 watts
Operation	Continuous, indicated by blue lamp. Requires annual lamp change.	Continuous, indicated by blue lamp. Fan operation distributes sanitised air throughout washroom. Requires annual lamp change.	Continuous, indicated by blue lamp. Fan operation distributes sanitised air throughout space. Requires annual lamp change.	Continuous, indicated by blue lamp. Requires annual lamp change.
Area Size	10m <sup>2</sup> / 20m <sup>2</sup> / 30m <sup>2</sup>	30m <sup>2</sup> / 40m <sup>2</sup>	40m <sup>2</sup> / 60m <sup>2</sup> / 80m <sup>2</sup>	20m <sup>2</sup>
Cover Material	Polycarbonate	Polycarbonate	Anodised Aluminium	Anodised Aluminium
Cover Colour	Titanium look or White	Titanium/Black	Titanium	Titanium
Installation Options	Wall mounted vertical installations only	Wall or ceiling, vertical or horizontal mounted	Wall or ceiling, vertical or horizontal mounted	Wall mounted silent operation. Thermal Convection.
Best Suited Applications	Perfect for Sluice rooms or Baby Change rooms. Not suitable for areas of constant occupation.	Use in constantly occupied enclosed areas including; changing rooms, kitchens and food preparation areas, care home lounges, corridors and reception areas, waiting rooms, open plan offices & nurseries.	Use in constantly occupied enclosed areas including; changing rooms, kitchens and food preparation areas, care home lounges, corridors and reception areas, waiting rooms, open plan offices & nurseries.	Use in constantly occupied enclosed areas. Ideal for Care Home resident bedrooms, as well as Offices and small to medium Public Areas.

UV light cannot escape from the unit from any angle ensuring it is completely safe. Ozone levels used are substantially below the most stringent emissions regulations in the world. Contact us for the Efficacy Pack.

# Automatic & Manual Hand dryers for Commercial Applications

## JETDRY JUNIOR Automatic Double Sided Hand Dryer

**499240**  
Silver

- Brushed motor 1250W-1650W
- 99.9% HEPA Filter
- UV Sterilisation
- 10-12 seconds drying time
- LED indicator
- Removable drip tray
- Air speed 150m/s
- IP23 Rated
- 70dBa at 1m
- H671xW279xD195mm



## JETDRY Automatic Double Sided Hand Dryer

**409393**  
Silver

- Lo-Carbon DC motor 750W-2050W
- 99.9% HEPA Filter
- UV Sterilisation
- 10 seconds drying time
- LED indicator
- Removable drip tray
- Air speed 95m/s
- Antibacterial coating
- IPX4 Rated
- 75dBa at 1m
- H700xW300xD225mm



## 1.2kW Automatic Hand Dryer

**499241**  
White  
**499242**  
Satin Steel

- 10-12 seconds drying time
- Blue LED for hand drying range
- Powerful operation
- 99.9% HEPA Filter
- IPX1 Rated
- H312xW225xD172mm



## 2.3kW Automatic Hand Dryer

**477639**  
White  
**477640**  
Polished Stainless Steel

- 70dBa at 1m
- Approximately 23 seconds drying time
- Blue LED 'Dryzone' indicator
- Chrome plated nozzle
- H237xW270xD208mm



## 1.1kW Compact Eco Swift

**409733**  
White  
**409734**  
Satin Stainless Steel  
**409735**  
Polished Stainless Steel

- Intelligent sensing, element auto switch off when ambient temperature reaches 25°C, reducing the wattage of the dryer to 0.5kW
- 10-12 seconds drying time
- Infrared Automatic
- H260xW180xD157mm



## 1.6kW Tornado Hand Dryer

**437656**  
White  
**437659**  
Polished Stainless Steel  
**437661**  
Satin Stainless Steel

- 10-12 sec drying time
- Blue LED for hand drying range
- Powerful operation
- Power usage adjustable to 0.9kW
- Save up to 70% on energy costs
- H277xW201xD175mm



## 1kW Automatic Eco Fast Dryer

**444769**  
Epoxy Coated

- 1.2mm thick steel cover
- Intelligent sensing, element auto switch off when ambient temperature reaches 25°C
- Element adjustable down to 0.5kW
- Approximately 13 seconds drying time
- Infrared Automatic
- H180xW250xD138.5mm



## 1.5kW Automatic Hand Dryer

**429022**  
Gloss White  
2kW Automatic Hand Dryer  
**496870**  
Gloss White

- Approximately 30 seconds drying time
- Quiet operation
- Hygienic
- H275xW225xD160mm



## 2kW Automatic Hand Dryer

**441356**  
Stainless Steel

- Quiet operation
- Hygienic
- Approximately 28 seconds drying time
- H280xW270xD148mm







Part L compliant fans meet all the revised energy efficiency levels for new build and refurbishment applications as introduced in 2010, still allowing all other products to support the substantial replacement ventilation market



### Quiet Concealed IPX5 Zone 1 Fan Range 100mm 4" Axial Fans

Cat No.	Description	m <sup>3</sup> /hr	Ltr/s	Watts	dB(A)@3m
412442	Quiet fan 100mm	73	21	6	28
412443	Quiet fan 100mm plus timer	73	21	6	28
412444	Quiet fan 100mm plus timer plus humidistat	73	21	6	28



### Tile Fan Range 100mm 4" Axial Fans

Cat No.	Description	m <sup>3</sup> /hr	Ltr/s	Watts	dB(A)@3m
442828	Tile fan 100mm	75	20	15	41
442829	Tile fan 100mm plus timer	75	20	15	41
442830	Tile fan 100mm plus humidistat	75	20	15	41



### Domestic Range 100mm 4" Axial - Toilet and Bathroom Fans

Cat No.	Description	m <sup>3</sup> /hr	Ltr/s	Watts	dB(A)@3m
457085A	Standard fan	88	24.44	16	32
459299A	Standard fan plus pull cord	88	24.44	16	32
457086A	Standard fan plus timer	88	24.44	16	32
459294A	Standard fan plus humidistat plus pull cord	88	24.44	16	32
459309A	Standard fan plus shutters and timer	88	24.44	20	32
459318A	Standard fan plus humidistat, pull cord and shutters	88	24.44	20	32



### Domestic Range 150mm 6" Axial - Kitchen Fans

Cat No.	Description	m <sup>3</sup> /hr	Ltr/s	Watts	dB(A)@3m
426566	Standard fan	245	68.06	25	45
438170	Standard fan and pull cord	245	68.06	25	45
438171	Standard fan and timer	245	68.06	25	45
435103	Standard fan plus shutters and pull cord	245	68.06	30	45
426568	Standard fan plus shutters and timer	245	68.06	30	45



### Quiet Fan Range 100mm 4" Axial Fans

Cat No.	Description	m <sup>3</sup> /hr	Ltr/s	Watts	dB(A)@3m
406957	Quiet fan 100mm	75	21	4.8	27
406958	Quiet fan 100mm plus timer	75	21	4.8	27
406959	Quiet fan 100mm plus humidistat	75	21	4.8	27



### Domestic Range 100mm 4" Shower Fan Kits

Cat No.	Description	m <sup>3</sup> /hr	Ltr/s	Watts	dB(A)@3m
434445A	In-line standard fan	85	23.61	14	41
434446A	In-line standard fan plus timer	85	23.61	14	41



### Domestic Range 100mm 4" Shower Fan and LED Light Kit

Cat No.	Description	m <sup>3</sup> /hr	Ltr/s	Watts	dB(A)@3m
477523	In-line standard fan plus timer complete with LED light kit, white and chrome bezels	86	24	10.4	41



### Domestic Range Part L Compliant 100mm 4" & 150mm 6" Inline Shower Fan Kits

Cat No.	Description	m <sup>3</sup> /hr	Ltr/s	Watts	dB(A)@3m
448385	100mm In-line standard fan	86	24	10	41
448386	150mm In-line standard fan	227	63	20	40





### Domestic Range Part L Compliant 100mm 4" & 150mm 6" Fans



Cat No.	Description	m <sup>3</sup> /hr	Ltr/s	Watts	dB(A)@3m
448379	100mm Standard fan	92	25.5	11	45
448380	100mm Standard fan plus timer	92	25.5	11	45
448381	100mm Standard fan plus humidistat	92	25.5	11	45
448382	150mm Standard fan	230	63.89	18	40
448383	150mm Standard fan plus timer	230	63.89	18	40
448384	150mm Standard fan plus humidistat	230	63.89	18	40

### Domestic Range Part L Compliant Inline Mixed Flow Fans



Cat No.	Description	Speed	m <sup>3</sup> /hr	Ltr/s	Watts	dB(A)@3m
442825	In-line standard fan 45ltr per second	High	244	67.78	25	24
		Low	180	50	20	20
442826	In-line standard fan 45ltr per second plus timer	High	244	67.78	25	24
		Low	180	50	20	20
477638	100mm Inline mixed flow fan plus timer with LED shower & light kit	High	244	67.78	25	24
		Low	180	50	20	20

Fully Building Code Compliant

### Domestic Range Part L Compliant 4" High Performance Centrifugal Fan



Cat No.	Description	m <sup>3</sup> /hr	Ltr/s	Watts	dB(A)@3m
AC100TN	Single speed fan with electronic over run timer	75	20.83	11	36

### Domestic Range Part F&L Compliant 100mm Low Watt 4" Continuous Running Filterless Centrifugal Fans



Cat No.	Description	Speed	m <sup>3</sup> /hr	Ltr/s	Watts	dB(A)@3m
409737	Standard fan plus humidistat plus pull cord	Low			1.5	24
		High			2.5	25.9
		Boost			8	38.5
409738	Standard fan plus humidistat plus pull cord SELV	Low			1.5	24
		High			2.5	25.9
		Boost			8	38.5

### Low Profile Range 100mm 4" Low Profile (15mm) Axial and Low Voltage Axial



Cat No.	Description	m <sup>3</sup> /hr	Ltr/s	Watts	dB(A)@3m
431301	Standard fan	90	25	14	38
431302	Standard fan plus timer	90	25	14	38
404119	Standard fan plus timer, Chrome	90	25	14	38
434399	Standard SELV 12V fan plus timer	90	25	23	38
495942	Standard fan plus timer and humidistat	90	25	14	38
495943	Standard SELV 12V fan plus humidistat	90	25	23	38

### Low Profile Range 150mm 6" Low Profile (15mm) Slim Axial with Butterfly Shutters. IP44



Cat No.	Description	m <sup>3</sup> /hr	Ltr/s	Watts	dB(A)@3m
435403	Standard fan	228	63.33	16	45
435404	Standard fan plus timer	228	63.33	16	45
435405	Standard fan plus humidistat	228	63.33	16	45





## Flat Ducting



### Cat No. Description

#### 100mm x 54mm Flat Ducting

404120	Flat channel lengths 1m
404121	Flat channel lengths 2m
404122	Short round to rectangle adaptor male
404123	Flat channel connector
404124	Elbow bend 90° Male
404125	Elbow bend 90° Female
404126	Vertical 90° bend
404127	Horizontal 90° bend
404128	Horizontal air brick
404129	Air brick grille
404130	Flat channel clips pair
404131	T Piece

#### 204mm x 60mm Flat Ducting

404132	Flat channel lengths 1.5m
404133	Horizontal 90° bend
404134	Vertical 90° bend
404135	Duct clip pair
404136	Connector
404137	Elbow bend 90° Male
404138	Round to rectangle adaptor
404139	Air brick connector and grille
404140	T Piece

## Additional Accessories



### Cat No. Description

409736	100mm diameter 10m insulated ducting
404141	PVC Flexible Ducting 100mm x 15m
404142	PVC Flexible Ducting 100mm x 45m
404143	100mm x 350mm ABS Pipe
404144	100mm diameter Y Piece
404145	150mm - 100mm Reducer
404146	100mm Round Grille White
404147	100mm Round Grille Chrome
495945	150mm Round Grille White
495946	100mm External Circular Grille
401899	Window fixing kit 100mm
401900	Window fixing kit 150mm
401901	Wall fixing kit 100mm
401902	Wall fixing kit 150mm

## Multi Vent & Accessories



### Cat No. Description

478192	Continuous running whole house mechanical extract ventilation unit. 3 speeds, Low - 45ltr/s, Medium - 85ltr/s, High - 123ltr/s
404153	60-215mm Worm drive hose clip
404155	Extract diffuser 125mm
404156	Supply diffuser 125mm

## Commercial Range Ancillaries



### Cat No. Description

401897		PVC Ducting 3m 100mm
401898		PVC Ducting 3m 150mm
401903	401905	Gravity grille 100mm - white [401903] or brown [401905]
401904		Gravity grille 150mm - white
401907	401909	Fixed grille 100mm - white [401907] or brown [401909]
401908	401910	Fixed grille 150mm - white [401908] or brown [401910]
401899		Window fixing kit 100mm
401900		Window fixing kit 150mm
401901		Wall fixing kit 100mm
401902		Wall fixing kit 150mm



## Lo-Carbon PIV Systems



The Positive Input Ventilation (PIV) unit has been designed to prevent and treat condensation and mould quickly. It is perfect for refurbished properties thanks to it being easy to fit for installers and discreet for homeowners.

The unit offers a quick and simple solution as it draws fresh air from the loft, filters it and gently feeds it into the dwelling via a ceiling-mounted diffuser. Clean, fresh filtered air with a lower moisture content dilutes, displaces and replaces contaminated and moisture-laden air.

- Fully adjustable between 19l/s - 49l/s
- Low running costs
- Low sound level
- Complete with ceiling diffuser, flexible duct and G4 filters
- IPX2 rated
- Easy to install and commission

Cat No.	Description
412445	Lo-Watt PIV Unit
412446	Lo-Watt PIV Unit Plus Heater
412447	PIV G4 Filters

## Commercial Range 125mm In-line Mixed Flow Fan



Cat No.	Description	Speed	m <sup>3</sup> /hr	Ltr/s	Watts	dB(A)@3m
		High	310	86	33	35
477633	In-line standard fan	Low	240	67	28	31
		High	310	86	33	35
477634	In-line standard fan plus timer	Low	240	67	28	31

Fully Building Code Compliant

## Commercial Range 150mm In-line Mixed Flow Fan



Cat No.	Description	Speed	m <sup>3</sup> /hr	Ltr/s	Watts	dB(A)@3m
		High	500	138	48	35
477635	In-line standard fan	Low	400	111	42	31
		High	500	138	48	35
477636	In-line standard fan plus timer	Low	400	111	42	31

Fully Building Code Compliant

## Commercial Range 230mm 9" and 300mm 12" Axial Fans



PART F COMPLIANT

Cat No.	Description	Speed	m <sup>3</sup> /hr	Ltr/s	Watts	dB(A)@3m
		High	932	258.89	90	52
401893	230mm 9" Standard fan plus auto shutters 259Ltr/sec	Low	684	190	90	51
		High	932	258.89	90	52
401891	230mm 9" Standard fan with fixed grille 259Ltr/sec	Low	684	190	90	51
		High	1494	415	100	53
401896	300mm 12" Standard fan plus auto shutters 415Ltr/sec	Low	961	266.94	100	52
		High	1494	415	100	53
401894	300mm 12" Standard fan with fixed grille 415Ltr/sec	Low	961	266.94	100	52

401940	Window kit for 230mm
401941	Window kit for 300mm

## Commercial Range Fan Controller



Cat No.	Description
401961	2 Speed + off. Reversible

## Ceiling Sweep Fans

- Suitable for winter - De-stratification applications or summer cooling
- 2 Down rod lengths included
- Easy to install
- Quiet running
- Can be installed for either upward or downward airflow
- Reversible electronic controller available

### Ceiling Sweep Fans

Both long and short down rods included as standard. Short down rod including motor is 360mm, long down rod including motor is 610mm.

Cat No.	Size
444122	36"
444123	48"
444124	56"

### Ceiling Fan Controller

White cover plate can be flush or surface mounted. Suitable for commercial environments.

Cat No.	Description
499301	Controls up to 3 fans





# HAND DRYERS FOR ANY APPLICATION

## PREMIUM COMMERCIAL



Perfect for high use locations such as large offices, city bars and shopping centres.

- High Quality Finish Options
- Stainless Steel Grade 304 Construction
- Rapid Drying Timing
- Economical Running Costs

### 1.0kW Compact High Speed

Available in white or stainless steel  
Dimensions H180xW275xD135mm

Cat. no.
1011WH
1011SS
SP1011
Replacement HEPA Filter



10-12  
SECOND  
DRY

### 1.5kW High Speed

Available in white or stainless steel  
Dimensions H320xW290xD170mm

Cat. no.
1012WH
1012SS



10-12  
SECOND  
DRY

### 1.8kW Heavy Duty

Available in white or chrome  
Dimensions H320xW280xD170mm

Cat. no.
1019WH
1019CH



10-15  
SECOND  
DRY

## COMMERCIAL



Ideal for medium use locations such as busy offices or restaurants.

- High Quality Finish Options
- Durable Polycarbonate Construction
- Rapid Drying Timing
- Economical Running Costs

### 1.1kW Low Energy

Available in white or silver  
Dimensions H265xW250xD180mm

Cat. no.
1016WH
1016SL



10-15  
SECOND  
DRY

## LITE COMMERCIAL



Most suitable for lower use locations such as small offices or country pubs.

- Durable Polycarbonate Construction
- Quick Drying Timing

### 2.3kW Compact Hand Dryer

White  
Dimension H265xW245xD207mm

Cat. no.
1001WH



20  
SECOND  
DRY



# Airconditioners



0151454019  
PAC EX120 Quiet



0151454016  
PAC EX100 Quiet



0151462012  
PAC EL110 WIFI Quiet



0151462009  
PAC EL98 Eco Real Feel



0151457014  
PAC EM93K.1 Quiet



0151457012  
PAC EM82K.1



Model	PAC EX120 Quiet	PAC EX100 Quiet	PAC EL110 WIFI Quiet	PAC EL98 Eco Real Feel	PAC EM93K.1	PAC EM82K.1
Cat No.	0151454019	0151454016	0151462012	0151462009	0151457014	0151457012
Rated Voltage/Frequency (V-Hz)	220/240-50	220/240-50	220/240-50	220/240-50	220/240-50	220/240-50
Maximum cooling capacity in air to air mode	11500	10000	11000	10700	10500	9400
Cooling capacity (kW)	3.0	2.5	2.9	2.7	2.6	2.4
Input power (W)	1050	700	1115	930	1000	1000
EER	2.85	3.6	2.6	2.6	2.6	2.6
Energy Efficiency Class	A	A++	A	A	A	A
Hourly Energy Consumption (kWh/1h)	1.0	0.7	1.0	1.0	1.0	0.9
Airflow (min/med/max fan speed) (m³/h)	250/310/350	250/310/350	250/310/350	250/310/350	340/370/400	340/370/400
Max dehumidifying quotient (in dehum. mode) (Ltr/24h)	41	32	35	36	50	43
Pressure noise level (min-max) dB(A)	49-53	49-53	47-50	47-50	47-50	47-50
Maximum Sound Power Level dB(A)	64	64	64	64	63	63
Standby power consumption (W)	<1	<1	<1	<1	<1	<1
Refrigerant gas	R290	R290	R290	R290	R290	R290
For rooms up to (m²)	110	110	110	100	90	80
Display	LED - with CLI	LED - with CLI	LED - with CLI	LED	LED	LED
Room thermostat	•	•	•	•	•	•
Setting temperature	°C	°C	°C	°C	°C	°C
Only fan function	•	•	•	•	•	•
Fan speed	3	3	3	3	3	3
Quiet operation	•	•	•	•	•	•
Dehumidifying function/Condensate recycling system	•/•	•/•	•/•	•/•	•/•	•/•
Timer (hr)	24	24	24	24	24	24
Auto-diagnosis/LCD IR remote control	•/•	•/•	•/•	•/•	•/•	•/•
Dimensions (HxWxDmm)	805x445x390	805x445x390	750x450x410	750x450x410	700x425x345	700x425x345
Weight (kg)	32	30	33	33	31.5	31.5



Maintain the ideal environment around your home throughout the year

## Dehumidifiers

A dehumidifier removes the excess moisture that we create on a daily basis through activities such as running baths, showers, cooking and drying laundry. All of which could lead to condensation, damp and mould that can damage your home and health. A dehumidifier can help maintain a more constant level of humidity and alleviate these conditions. The higher the extraction rate, the more condensation will be controlled.



DEX216F



DEX214F



DEX212F

	Dimensions (w x d x h) cm	Rated Voltage/ Frequency	For rooms up to (m <sup>2</sup> )	Anti Frost Function	Pre-Filter (washable)	HEPA Filter	Active Carbon Filter	Moisture Removal (L/24hr)	Tank Capacity	No of years
<b>DEX216F</b>	33.4x22x50	220-240V 50-60	75	•	•	•	•	16	2.3	2
<b>DEX214F</b>	33.4x22x50	220-240V 50-60	65	•	•	•		14	2.3	2
<b>DEX212F</b>	33.4x22x50	220-240V 50-60	55	•	•	•		12	2.3	2



## Dyson Airblade™ technology. Touch-free, HEPA-filtered and no paper waste.

All Dyson Airblade™ hand dryers use HEPA filtration to dry hands with purified air. Tested and proven to capture 99.95% of particles as small as 0.1 microns.

You save on costs, washroom space, CO<sub>2</sub> emissions and mess. They are engineered for high-traffic and come with a 5-year guarantee.

For full product details:  
[www.dyson.co.uk/commercial/hand-dryers](http://www.dyson.co.uk/commercial/hand-dryers)

### dyson airblade 9kJ

The fastest most energy efficient HEPA-filtered hand dryer.<sup>1</sup>

Dry time: 10-12 seconds
Noise level: 77dB in Eco mode
Rated power: 900W (Max), 650W (Eco)
Dimensions: H500 x L100 x W450mm
Low energy. Low running costs

Stainless Steel



Cat No.

HU03

1. Dry time and energy consumption calculated for Max mode. Dry time was determined using Dyson test method 769 based on NSF P335 to a measurement of 0.1g residual moisture.  
2. Average electricity price £0.1/kWh as of December 2018. See our calculations.

### dyson airblade wash+dry

Airblade™ hand drying technology in a tap.

Dry time: 14 seconds
Noise level: 81dB
Rated power: 1000W
Dimensions: H159 x L286 x W303mm
76% less expensive to run than other hand dryers



Cat No.

WD04 Short  
WD05 Tall  
WD06 Wall



The Dyson Airblade 9kJ hand dryer produces up to 85% less CO<sub>2</sub> emissions than single-use paper towels and costs up to 99% less to run.<sup>2</sup> Creating a better environment in washrooms and the world outside. The fastest most energy efficient HEPA-filtered hand dryer.<sup>1</sup>

Low energy
Low running costs
Uses 9.1 kilojoules of energy per dry
Costs just £19 a year to run in Eco mode



### dyson airblade V

The most hygienic hand dryer is 35% quieter.<sup>3</sup>

Dry time: 12 seconds
Noise level: 79dB
Rated power: 1000W
Dimensions: H394 x L100 x W234mm
Designed for compact spaces



Cat No.

HU02 Sprayed nickel  
HU02 White



3. With reprogrammed software, the 1000W Dyson digital motor V4 makes the Dyson Airblade V hand dryer 35% quieter than its predecessor.





## Commercial Fans and Commercial Controllers

- Complies with all European standards CE/EMC
- Reversible for summer and winter applications
- Quiet vibration free operation
- Energy efficient
- Variable speed capability
- Tough powder coated paint finish
- Pre assembled for easy installation



### Fans

Cat No	Size	Colour	Description
111870	36"	White	Reversible, Complete with 12" Drop Rod
111887	48"		Reversible, Complete with 12" & 24" Drop Rods
111894	56"		Reversible, Complete with 12" & 24" Drop Rods

### Controls

Cat No	Description
333029	SIC1 Controls one fan only - no reverse function
333036	RV01 Controls one fan only - with reverse function
331674	RV05 Controls up to 5 fans - with reverse function

### Montana White



Cat No	Size	Description
117490	36"	3 Speed, dual mount, 3 lights, pull cord operation,
117483	42"	forward & reverse settings

### Moreno White



Cat No	Size	Description
117469	36"	3 Speed, dual mount, globe light, pull cord operation,
117452	42"	forward & reverse settings

### Atlanta



Cat No	Size	Colour	Description
111573	30"	White	3 Speed, dual mount, globe light, pull cord operation, forward & reverse settings
114390		Brushed Nickel	

### Neptune LED



Cat No	Size	Colour	Description
115861	44"	White	Remote control, 3 speed, dual mount, dimmable LED light, 6" rod included, forward & reverse settings
115847	54"		
115878	44"		
115854	54"	Brushed Nickel	

### Belaire



Cat No	Size	Colour	Description
771203	42"	White	Remote control, 3 speed, dual mount, 3 lights, 12" rod included, forward & reverse settings
771173		Polished Brass	
771197		Brushed Nickel	

### USB Desk Fan



Cat No	Colour	Description
119708	Black	6" USB powered fan, 2 speeds, very quiet operation, 3W motor
119715	Blue	
119722	Green	

### Vintage Desk Fan



Cat No	Colour	Description
119654	Blue	1920s inspired vintage styling, 3 speeds, 50W motor, 34cm diameter, 4 blades, high quality hammered metal finish, optional oscillation, tilting head

### Whirlwind Desk Fan



Cat No	Description
119760	3 Speed, 45W motor, 21cm diameter, 4 blades, optional oscillation, 45 degree tilting head, quiet operation

### Cubix Heater



Cat No	Description
120001	Silver finish, 1800W or 900W heat setting, quiet operation, optional oscillation, easy lift handle, tip over safety cutoff, H260xW140xD170mm



**S6CLIPFAN**  
**6" CLIP FAN**

- Fully guarded plastic blades
- Mesh safety cover
- 2 Speed settings




**S9DESKFAN**  
**9" DESK FAN**

- Oscillating control & tilt action
- Fully guarded plastic blades
- Metal mesh safety cover
- 2 Speed settings




**S12DESKFAN**  
**12" DESK FAN**

- Oscillating control & tilt action
- Fully guarded plastic blades
- Metal mesh safety cover
- 3 Speed settings




**S16DESKFAN**  
**16" DESK FAN**

- Oscillating control & tilt action
- Fully guarded plastic blades
- Metal mesh safety cover
- 3 Speed settings




**S16STANDFAN**  
**16" PEDESTAL FAN**

- Oscillating control & tilt action
- Adjustable height
- Fully guarded plastic blades
- Metal mesh safety cover
- 3 Speed settings




**S32TOWERFAN**  
**TOWER FAN**

- Oscillating control
- 3 Speed settings
- 120 Minute timer




**S18CFLOORFAN**  
**18" POWER FAN**

- Tilt action
- Fully guarded blades
- Metal mesh safety cover
- 3 Speed settings






# Vent-Axia

## VENTILATION EXCELLENCE

### Smart, Stylish, Silent Bathroom Fans



**7**  
yr  
WARRANTY

## PUREAIR SENSE

Bathroom Fan with Odour Sense Technology

- Automatic odour sensor
- LED touch panel
- App connected
- Silent running, as low as 19dB(A)
- Low power consumption at 2.5W
- Interchangeable spigots for 100 or 125mm

Cat No.

**479460**



**5**  
yr  
WARRANTY

## SVARA

Stylish and Versatile Bathroom Fan

- 1 model for all applications
- 3 speed
- Only 17dB(A)
- Silent and purge modes available
- IP44 rated and DC motor
- Bluetooth for app control

Cat No.

**409802**

Model

White

**496711**

Black

Wall Kit - White: 254102 - £31.81



UP TO  
**5**  
yr  
WARRANTY

## SILENT FAN

Silently Improving Indoor Air Quality

- IPX5 - Zone 1 rated
- Intermittent and continuous running options
- 2 speed & variable speed options available at installation
- Suitable for wall, ceiling, window and panel mounting
- From only 12dB(A)

Cat No.	Open Grille Model
<b>495700</b>	Variable Speed, Intermittent
<b>495701</b>	Variable Speed, Intermittent, Timer
<b>495702</b>	Variable Speed, Intermittent, Humidity Timer
<b>495703</b>	Variable Speed, Continuous, Timer
<b>495704</b>	Variable Speed, Continuous, Humidity Timer
<b>495697</b>	Fixed Speed, Intermittent
<b>495698</b>	Fixed Speed, Intermittent, Timer
<b>495699</b>	Fixed Speed, Intermittent, Humidity Timer
<b>495705</b>	Fixed Speed, Intermittent, PIR

Cat No.	Closed Grille Model
<b>479085</b>	Variable Speed, Intermittent
<b>479086</b>	Variable Speed, Intermittent, Timer
<b>479087</b>	Variable Speed, Intermittent, Humidity Timer
<b>479088</b>	Variable Speed, Continuous, Timer
<b>479089</b>	Variable Speed, Continuous, Humidity Timer
<b>446658</b>	Fixed Speed, Intermittent
<b>446659</b>	Fixed Speed, Intermittent, Timer
<b>477436</b>	Fixed Speed, Intermittent, Humidity Timer

## PUREAIR HOME

The Simple Solution for Improving Indoor Air Quality

- Whole house air purification\*
- Discreet installation
- Less than £13 per year to run\*\*
- Condensation & mould control

Cat No. Model

**479090** PureAir Home

**479091** PureAir Home with heater

**479092** PureAir Home 3 storey

**5**  
yr  
WARRANTY

\*Up to four bedrooms \*\*Two bedroom property, 23 hours on trickle mode (heater not in use)





# Vent-Axia®



Tried and Trusted Range



Full Spares Support Available



For over 30 years, the **T-Series** continues to be the UK's Number 1 Commercial Fan installed in restaurants, offices, shops and pubs.

## T-Series®

Traditional Axial Commercial Fans

### Features & Benefits

- Fully speed controllable
- Panel, window, wall or roof versions available
- Also available in modular format as fitting kit only or fan core only
- Reversible for intake / extract
- Low sound levels
- Available in 4 sizes 6"/7"/9"/12"
- Electronic shutter system

### Performance (High)

Cat No.	Model	m <sup>3</sup> /hr	Watts	dB(A)@3m	Size	Fitting
W161510	TX6WL	270	40	43	6 Inch	Wall
W163510	TX9WL	515	85	43	9 Inch	Wall
W164510	TX12WL	1185	105	49	12 Inch	Wall
W161110	TX6WW	245	30	41	6 Inch	Window
W163110	TX9WW	465	85	43	9 Inch	Window
W164110	TX12WW	1095	105	48	12 Inch	Window
W161610	TX6PL	295	30	41	6 Inch	Panel
W163610	TX9PL	565	85	43	9 Inch	Panel
W164610	TX12PL	1270	105	44	12 Inch	Panel



Cat No.	Description
W361119	TSC Controller



**2**  
yr  
WARRANTY



## Vent-Axia PureAir Room

Advanced Air Purification

### Features & Benefits

- Advanced 6 stage filtration system
- Air quality display
- Portable
- Filter replacement reminder
- Timer setting
- 3 speeds
- Sleep mode
- Auto mode

Cat No.	Model
<b>496611</b>	PureAir Room Air Purifier
<b>496612</b>	PureAir Room X Air Purifier with App Control
<b>496613</b>	PureAir Room & PureAir Room X replacement filter



## Slim Line 100/150

Axial Bathroom, Toilet & Kitchen Fan

### Features & Benefits

- Slimline 15mm profile
- Panel or wall mounted
- IP44 (100mm) & IPX4 rated (150mm)

Cat No.	Model	Performance				
		m <sup>3</sup> /hr	Watts	dB(A)@3m	Shutters	Timer
<b>436530</b>	BAS100SLB	90	14	38	✓	
<b>436532</b>	BAS100SLT	90	14	38	✓	✓
<b>436533</b>	BAS150SLB	228	16	45	✓	
<b>436535</b>	BAS150SLT	228	16	45	✓	✓



## Eclipse 100/150

Axial Bathroom, Toilet & Kitchen Fan

### Features & Benefits

- Slimline 19mm profile
- Ceiling or wall mounted
- IP44 (100mm) & IPX4 rated (150mm)

Cat No.	Model	Performance					
		m <sup>3</sup> /hr	Watts	dB(A)@3m	Shutters	Timer	Pullcord
<b>427310</b>	Eclipse 100X	90	14	38	✓		
<b>427281</b>	Eclipse 100XP	90	14	38	✓		✓
<b>427282</b>	Eclipse 100XT	90	14	38	✓	✓	
<b>427283</b>	Eclipse 150X	220	16	45	✓		
<b>427313</b>	Eclipse 150XP	220	16	45	✓		✓



## LuminAir

Inline Fan and Light Fan Kit

### Features & Benefits

- Fan and light kit
- Safety extra low voltage fan and lamp
- IPX7 rated
- Chrome and white bezel available

Cat No.	Model	Performance					
		m <sup>3</sup> /hr	Watts (fan)	Watts (light)	dB(A)@3m	Timer	Humidity
<b>453410</b>	LuminAir Kit L	110	20	3	35		
<b>453413</b>	LuminAir Kit T	110	20	3	35	✓	
<b>453416</b>	LuminAir Kit H	110	20	3	35	✓	✓



## Silhouette® 100/150

Axial Bathroom, Kitchen and Toilet Fan

### Features & Benefits

- Panel, ceiling or wall mounted
- Window mounted (100 only)
- Slimline 17 or 19mm profile
- IPX4 rated



Cat No.	Model	Performance				Shutters	PIR	Timer	Humidity
		m <sup>3</sup> /hr	Watts	dB(A)@3m					
454055	Silhouette 100B	75	14	30	✓				
454056	Silhouette 100T	75	14	30	✓		✓		
454057	Silhouette 100H	75	14	30	✓			✓	
454058	Silhouette 100TM	75	14	30	✓	✓	✓		
454059	Silhouette 150X	241	20	43	✓				
454060	Silhouette 150T	241	20	43	✓		✓		
454061	Silhouette 150H	241	20	43	✓			✓	

Silhouette 100 - Wall Kit - Brown - 254100 Wall Kit - White - 2541021

Silhouette 150 - Wall Kit - Brown - 140903 Wall Kit - White - 140902

Window Kit: 140901

## VA100

Axial Bathroom and Toilet Fan

### Features & Benefits

- Panel, ceiling, window or wall mounted
- IPX4 rated
- Standard thermal overload protection
- Meets Building Regulations Approved Document F



Cat No.	Model	Performance				Shutters	Pullcord	Timer	Humidity
		m <sup>3</sup> /hr	Watts	dB(A)@3m					
251110	VA100LP	107	13	36		✓			
251210	VA100LT	107	15	36			✓		
251310	VA100XP	107	15	36	✓	✓			
251410	VA100XT	107	18	36	✓		✓		
251610	VA100LHP	107	16	36		✓		✓	
251710	VA100XHP	107	18	36	✓			✓	
251510	VA100XHT	107	18	36	✓		✓	✓	

Wall Kit - Brown: 254100 White: 254102

Window Kit: 254101

## VA140/150

Axial Kitchen Fan

### Features & Benefits

- Panel, ceiling, window or wall mounted
- IP44 rated
- Thermo electric shutter protection
- Meets Building Regulations Approved Document F



Cat No.	Model	Performance				Shutters	Pullcord	Timer	Humidity
		m <sup>3</sup> /hr	Watts	dB(A)@3m					
140120	VA140/150KP	245	19	36	✓	✓			
140220	VA140/150KT	245	19	36	✓		✓		
140320	VA140/150KHP	245	19	36	✓	✓		✓	
140420	VA140/150KHT	245	19	36	✓		✓	✓	
458915	VA140/150VS*	245	19	36	✓				

\*Variable Speed

Wall Kit - Brown: 140903 White: 140902

Window Kit: 140901





## ACM 100-200

Inline Mixed Flow Fan



### Features & Benefits

- Designed and manufactured in UK
- Multiple speed motor
- Timer versions available
- Removable motor core assembly
- Rotating motor chassis assembly
- IP44 rated
- Aesthetically pleasing with wipe clean polymer casing
- Sound data from independent testing
- Running speed selected on installation

### Performance

Cat No.	Model	m <sup>3</sup> /hr	Watts	dB(A)@3m	Timer
<b>17104010</b>	ACM100	252	20	16	
<b>17104020</b>	ACM100T	252	20	16	✓
<b>17105010</b>	ACM125	216	30	17	
<b>17105020</b>	ACM125T	216	30	17	✓
<b>17106010</b>	ACM150	468	40	29	
<b>17106020</b>	ACM150T	468	40	29	✓
<b>17108010</b>	ACM200	396	80	26	
<b>17108020</b>	ACM200T	396	80	26	✓

## ACM 250-315

Inline Mixed Flow Fan



### Features & Benefits

- Available in two sizes
- Simple installation
- Supplied complete for installation
- Optimise fan performance by using an approved Vent-Axia controller
- Diagonal impeller with stator
- Galvanized metal housing
- Integrated thermal switch
- Includes a mounting bracket
- Designed to meet IP54

### Performance

Cat No.	Model	m <sup>3</sup> /hr	Watts	dB(A)@3m
<b>17110010</b>	ACM250	1620	145	53
<b>17112010</b>	ACM315	2340	270	56

## Other Ranges Available



Heat Recovery Units



Heating



Industrial Fans



# Simply Silent™ Fans

4"/100mm **Simply Silent™ Contour** extractor fan, for the effective control of humidity and odours in bathrooms, shower rooms, cloakrooms and toilets. Includes square and round fascias.

Cat No.	Reference	Model	Speeds	l/s	Watts	dB(A)@3m
C4SR	078339	Standard	2	15/21	6.3/7	15/29
C4TSR	078346	Timer	2	15/21	6.3/7	15/29
C4PSR	078353	Pullcord	2	15/21	6.3/7	15/29
C4HTSR	078360	Humidistat/Timer	2	15/21	6.3/7	15/29

4"/100mm **Simply Silent™ Contour – Constant Volume** extractor fan, for the effective control of humidity, odours and mould growth in kitchens, bathrooms, shower rooms, cloakrooms and toilets.

Cat No.	Reference	Model	l/s Bathroom	l/s Kitchen
CV4SR	078377	Constant Volume	5/8/18	8/13/18
LVCV4SR	078384	Low Volt Constant Volume	5/8/18	8/13/18

4"/100mm **Simply Silent™ DX100** is a dual-speed extractor fan that shares many of the same features and benefits of the Simply Silent™ Contour, but with a more conventional grille-style fascia.

Cat No.	Reference	Model	Speeds	l/s	dB(A)@3m
DX100S	93025AW	Standard Square	2	15/21	22/34
DX100PS	93027AW	Pullcord Square	2	15/21	22/34
DX100TS	93026AW	Timer Square	2	15/21	22/34
DX100HTS	93028AW	Humidistat/Timer Square	2	15/21	22/34
DX100HPTS	93029AW	Humidistat/Pullcord/Timer Square	2	15/21	22/34
DX100PIRS	93030AW	PIR Square	2	15/21	22/34
DX100R	93005AW	Standard Round	2	15/21	22/34
DX100PR	93007AW	Pullcord Round	2	15/21	22/34
DX100TR	93006AW	Timer Round	2	15/21	22/34
DX100HTR	93008AW	Humidistat/Timer Round	2	15/21	22/34
DX100HPTR	93009AW	Humidistat/Pullcord/Timer Round	2	15/21	22/34
DX100PIRR	93010AW	PIR Round	2	15/21	22/34

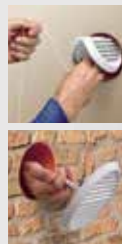
4"/100mm **Simply Silent™ LV100** axial extract fans complete with universal fitting kit.

- Can be installed in zones 1 and 2
- Transformer to be located out of zones

Cat No.	Reference	Model	Speeds	l/s	dB(A)@3m
LV100S	93031AW	Standard Square	2	16/21	22/34
LV100TS	93032AW	Timer Square	2	16/21	22/34
LV100PS	93033AW	Pullcord Square	2	16/21	22/34
LV100HTS	93034AW	Humidistat/Timer Square	2	16/21	22/34
LV100HPTS	93035AW	Humidistat/Pullcord/Timer Square	2	16/21	22/34
LV100PIRS	93036AW	PIR Square	2	16/21	22/34

The revolutionary **Simply Silent™ Wall Kit** allows fitting of the outer grille from the inside. Simply push the folded grille through the walltube and pull the attached string back to secure on the outside wall. Available in four different grille designs, the kit comes complete with wall tube and is compatible with all models in the Simply Silent™ range.

Cat No.	Reference	Model	Colour
SSWKWR	92991AW	Simply Silent™ Wall Kit Round	White
SSWKWS	92992AW	Simply Silent™ Wall Kit Square	White
SSWKBR	92993AB	Simply Silent™ Wall Kit Round	Brown
SSWKBS	92994AB	Simply Silent™ Wall Kit Square	Brown
SSWIN+	93235AA	Simply Silent™ Window Kit	White



## Simply Silent™ Shower Fan Complete Range

4"/100mm extractor fan and installation kit.



Cat No.	Reference	Model	Timer	Speed	l/s	dB(A)@3m
SSSFC	93086AW	Simply Silent Shower Fan Complete	Yes	2	15/21	22/34
SSISFC	93087AW	Simply Silent Illumi Shower Fan Complete	Yes	1	21	29

## Simply Silent™ Contour

Our quietest bathroom fan. Fact.



And it's So Simple to install

- Sleek and subtle design with both square and round fascias included in box
- Suitable for wall, ceiling, panel and window fitting
- Complies with building regulations Part F and L



## Simply Silent™ DX100

Technologically advanced. Contemporary styling.



## Simply Silent™ LV100

Technologically advanced. Contemporary styling.



The Simply Silent™ DX100 and LV100 come complete with a So Simple universal wall fitting kit.



- Kit includes:
- DX100BTR extractor fan
  - External grille
  - 3m flexible ducting



- Kit includes:
- C4TR extractor fan
  - External grille
  - 3m flexible ducting
  - SELV transformer



## Simply Silent™ DX150 6"/150mm Extractor Fan

- Sleek and subtle design available in square and round
- Suitable for wall, ceiling or panel installation • Quick-fit clamp for easy installation



Cat No.	Reference	Model	Speeds	l/s	m³/h	Watts	dB(A)@3m
DX150S	93070AW	Standard Square	2	60/67	214/241	15/23	39/42
DX150TS	93072AW	Timer Square	2	60/67	214/241	15/23	39/42
DX150PS	93074AW	Pullcord Square	2	60/67	214/241	15/23	39/42
DX150HTS	93076AW	Humidistat/Timer Square	2	60/67	214/241	15/23	39/42
DX150R	93071AW	Standard Round	2	60/67	214/241	15/23	39/42
DX150TR	93073AW	Timer Round	2	60/67	214/241	15/23	39/42
DX150PR	93075AW	Pullcord Round	2	60/67	214/241	15/23	39/42
DX150HTR	93077AW	Humidistat/Timer Round	2	60/67	214/241	15/23	39/42

## Simply Silent™ Contour 6 6"/150mm Extractor Fan

- Sleek and subtle design with interchangeable fascia options, available in square and round
- Suitable for wall, ceiling or panel installation • Quick-fit clamp for easy installation

**GHOST™**  
AIR MOVEMENT  
TECHNOLOGY



Cat No.	Reference	Model	Speeds	l/s	m³/h	Watts	dB(A)@3m
C6S	93170AW	Standard Square	2	60/62	216/225	15/22	41/44
C6TS	93172AW	Timer Square	2	60/62	216/225	15/22	41/44
C6PS	93174AW	Pullcord Square	2	60/62	216/225	15/22	41/44
C6HTS	93176AW	Humidistat/Timer Square	2	60/62	216/225	15/22	41/44

### Accessories

Cat No.	Reference	Model	Colour
SS150WKWR	93190AW	Simply Silent 150mm Wall Kit Round	White
SS150WKBR	93191AB	Simply Silent 150mm Wall Kit Round	Brown
DX150WK	93021AW	150mm Wall Kit	Black

## VX100-SP 100mm (4") axial extract fans with short spigot

- Designed for bathrooms, shower rooms and ensuites • Ideal for shallow wall or ceiling installation



Cat No.	Reference	Model	Maximum		
			Speeds	l/s	Watts
VX100-SP	92935AW	4"/100mm Standard	1	21	12
VX100T-SP	92931AW	4"/100mm Timer	1	21	12
VX100P-SP	92936AW	4"/100mm Pullcord	1	21	12

## VX100 100mm (4") axial extract fans

- Ideal for bathrooms • Very low profile, discreet design



Cat No.	Reference	Model	Maximum		
			Speeds	l/s	Watts
VX100	93224AWW	4"/100mm Standard	1	18	16

## GX6 EC/GXC6 EC 150mm (6") high performance axial extract fans

- Low watt EC motor for reduced running costs • Can be wall, window or panel mounted • Ideal for Kitchen and utility



Cat No.	Reference	Timer	Pullcord	Humidistat	Maximum			
					Speeds	m³/h	Watts	dB(A)@3m
GX6EC	071262	No	No	No	1	229	9.5	34
GXC6EC	071279	No	Yes	No	1	229	6.8	34



### Premier CF20TX 100mm (4")

All in one fan featuring continuous (dMEV) and intermittent extract for bathrooms and kitchens

- Designed to manage longer duct run applications
- Retrofittable to previous Premier fan ranges

Cat No.	Reference	Timer	Pullcord	Humidistat	Maximum			
					Speeds	m <sup>3</sup> /h	Watts	dB(A)@3m
CF20TX	067326	Yes	Yes	Yes	4	76	7	37



### Premier LVCF20TX 100mm (4")

All in one SELV fan featuring continuous (dMEV) and intermittent extract for bathrooms and kitchens

- Designed to manage longer duct run applications
- Retrofittable to previous Premier fan ranges
- Remote SELV transformer supplied

Cat No.	Reference	Timer	Pullcord	Humidistat	Maximum			
					Speeds	m <sup>3</sup> /h	Watts	dB(A)@3m
LVCF20TX	067333	Yes	Yes	Yes	4	76	7	37



### XS100 100mm (4") smooth axial extract fans

- Discreet cover design
- Very low profile

Cat No.	Reference	Model	Maximum		
			Speeds	l/s	Watts
XS100S	93346AA	4"/100mm Standard Square	1	23	10
XS100T	93347AA	4"/100mm Timer Square	1	23	10



### AirLine

Inline axial extract fan systems for shower cubicles

- Removes stale air via a grille installed above the shower
- Installed performance meets Building Regulations Part F

Cat No.	Reference	Timer	Integrated LED Light	Size (mm)	Installation Kit	Maximum		
						l/s	Watts	dB(A)@3m
AL100	93288AW	No	No	100	Yes	24	16	40
AL100T	93289AW	Yes	No	100	Yes	24	16	40



### AirLine LED

Inline axial extract fan systems for shower cubicles

- Removes stale air via a grille installed above the shower
- Installed performance meets Building Regulations Part F

Cat No.	Reference	Timer	Integrated LED Light	Size (mm)	Installation Kit	Maximum		
						l/s	Watts	dB(A)@3m
ALL100	93290AW	No	Yes	100	Yes	24	19	40
ALL100T	93291AW	Yes	Yes	100	Yes	24	19	40



## Commercial Fans



### WX6 EC Commercial wall fan

- Electro-thermal shutter cassette
- Plastic wall liner
- Includes low watt EC motor

Cat No.	Reference	Timer	Maximum				
			Extract (m <sup>3</sup> /h)	Intake m <sup>3</sup> /h	Speeds	Watts	dB(A)@3m
WX6EC	071422	No	217	None	1	10	36



### GX9/GX12 Commercial window fans

- GX9 and GX12 models are reversible and speed control

Cat No.	Reference	Motor	Maximum		
			Extract m <sup>3</sup> /h	Intake m <sup>3</sup> /h	dB(A)@3m
GX9	89994AW	AC	543/636	405/449	48/50
GXC9	89995AW	AC	520	None	44
GX12	90012AW	AC	1091/1546	772/1117	50/55



### XIMX 100/125

Inline mixed flow extract fans for domestic ducted applications

- Lubricated for life motors
- Supplied with convenient installation mounting cradle

Cat No.	Reference	Timer	Size (mm)	Maximum		
				Speeds	m <sup>3</sup> /h	dB(A)@3m
XIMX100	93078AW	No	100	2	145/187	36
XIMX100T	93079AW	Yes	100	2	145/187	36
XIMX125	93082AW	No	125	2	220/280	37



### XIMX 150

Inline mixed flow extract fans for ducted applications

- Supplied with convenient installation mounting cradle
- Lubricated for life, maintenance free motors

Cat No.	Reference	Timer	Size (mm)	Maximum		
				Speeds	m <sup>3</sup> /h	dB(A)@3m
XIMX150	93083AW	No	150	2	405/520	44
XIMX150T	93084AW	Yes	150	2	405/520	44



## Ventilation Units

### Everdri XEL/XELH

#### Positive input domestic ventilation unit

Xpelair Everdri is a wholehouse ventilation control system for houses with a loft space. The unit gently ventilates the home from a central position on the landing or in the central hallway in a bungalow to transform a stagnant and stale atmosphere into a fresh, healthy and condensation free environment. **XELH model has a pre-heater to temper the incoming air.**



Cat No.	Reference	Motor Type	Selectable Speeds	Extract Performance (FID m³/h)
XEL	110015	EC	3	216 Max. (fully adjustable)
XELH	110022	EC	3	216 Max. (fully adjustable)

### Xplus 2 AC

#### Multi-point domestic and commercial ventilation unit

The Xplus 2 is a high performing central extract system designed to continuously extract stale, moist air from domestic kitchens, bathrooms and commercial wet rooms. The unit is primarily used in domestic applications but can also be used for commercial applications where continuous extract is required. The multi-spigot 190mm low-profile design offers the installer greater flexibility when choosing where to site the unit and also due to the spigot configuration, allows ducting to be connected from any direction, therefore reducing airflow restriction and noise. The unit is suitable for either horizontal or vertical installation and has four speed options, three of which are selectable.



Cat No.	Reference	Motor Type	Selectable Speeds	Extract Performance (FID m³/h)
XPLUS2AC	92430AW	AC	4	155 / 237 / 329 / 471

### Xplus 2 EC/EC RF

#### Low-energy, multi-point domestic and commercial ventilation unit

Xplus 2 EC models boast all of the benefits that centralised extraction systems offer – like flexible siting, multiple spigot connections and high-performance extraction – plus the added benefit of long-life, energy-efficient EC motors with backward curved impellers. This allows these units to be configured at install to match the required Part F extraction rates for the size and layout of the dwelling, ensuring that high-quality indoor air is maintained throughout.



Cat No.	Reference	Motor Type	Selectable Speeds	Extract Performance (FID m³/h)
XPLUS2EC	92498AG	EC	3	550 Max. (fully adjustable)
XPLUS2ECRF	92854AG	EC	2	550 Max. (fully adjustable)
XPLUS2ECRFH	92795AG	EC	4	550 Max. (fully adjustable)

## Commercial Fan Controls and Ancillaries



Cat No.	Reference	Description
<b>COS</b>	90108AW	<b>Change Over Switch</b>
	<ul style="list-style-type: none"> <li>High/low speed selection</li> <li>Surface or recess mounting</li> </ul>	<ul style="list-style-type: none"> <li>85 x 85mm</li> <li>Used with: Premier DX400, DX400T, DX400RS with XRH</li> </ul>
<b>MOS</b>	90199AW	<b>Manual Override Switch</b>
	<ul style="list-style-type: none"> <li>2 Switches for speed selection and on/off operation</li> <li>Surface or recess mounting</li> </ul>	<ul style="list-style-type: none"> <li>85 x 85mm</li> <li>Used with: GX6, DX400, DX400RS with XRH</li> </ul>
<b>TBS</b>	90202AW	<b>Timer and Boost Switch</b>
	<ul style="list-style-type: none"> <li>Switching between humidity control/manual operation</li> <li>Manual operation at high/low speed</li> <li>Surface or recess mounting</li> </ul>	<ul style="list-style-type: none"> <li>85 x 85mm</li> <li>Used with: GX6</li> </ul>
<b>XRH</b>	400000573	<b>Remote Humidistat</b>
	<ul style="list-style-type: none"> <li>Automatic on/off operation relative to humidity levels</li> <li>Pullcord operated override switch</li> <li>Fan operation indicator light</li> <li>Supply voltage 220-240V 50Hz</li> </ul>	<ul style="list-style-type: none"> <li>Surface or recess mounting</li> <li>160 x 86mm</li> <li>Used with DX100, all Simply Silent fans, Airline, GX6/9/12, WX6/9/12</li> </ul>
<b>DT20B</b>	21850AW	<b>Time Delay Controller</b>
	<ul style="list-style-type: none"> <li>Typically connected to a lighting circuit</li> <li>Fan turns on when light is turned on</li> <li>User adjustable up to 20 minutes</li> <li>Supply voltage 220-240V 50Hz</li> </ul>	<ul style="list-style-type: none"> <li>Surface or recess mounting</li> <li>100 x 86mm</li> <li>Used with: Premier DX200, DX400, DX, LV, XIL, CMF, CX10, GX6/9/12, WX6/9/12, PX6/9/12, RX6/9/12</li> </ul>
<b>XPIRA</b>	21871AA	<b>Passive Infrared Sensor</b>
	<ul style="list-style-type: none"> <li>Switches fan on when movement is detected</li> <li>Built in run on timer to avoid nuisance tripping</li> <li>Supply voltage 220-240V 50Hz</li> </ul>	<ul style="list-style-type: none"> <li>86 x 86mm</li> <li>Used with DX100, all Simply Silent fans, CF20TX, Airline, GX6/9/12, WX6/9/12</li> </ul>
<b>FR22/30</b>	21868AW	<b>Single Fan Controller</b>
	<ul style="list-style-type: none"> <li>On/off, high/low speed and extract/intake airflow operation</li> <li>Sliding switch control with power on indicator</li> <li>Supply voltage 220-240V 50Hz</li> </ul>	<ul style="list-style-type: none"> <li>Surface or recess mounting</li> <li>210 x 86mm</li> <li>Used with: GX9/12, WX9/12, PX9/12, RX9/12</li> </ul>
<b>XCCI</b>	21859AW	<b>Single Direction Group Fan Controller</b>
	<ul style="list-style-type: none"> <li>Speed control knob provides infinitely variable speed control</li> <li>Sliding on/off control with power on indicator</li> <li>Extract or intake airflow</li> <li>Supply voltage 220-240V 50Hz</li> </ul>	<ul style="list-style-type: none"> <li>Surface or recess mounting</li> <li>160 x 86mm</li> <li>Used with: GX9/12, WX9/12, PX9/12, RX9/12</li> <li>Do not mix fan size. For use with up to four 12" or six 9" fan units</li> </ul>
<b>EC6H</b>	21854AW	<b>Reversible Group Fan Electronic Controller</b>
	<ul style="list-style-type: none"> <li>Speed control knob provides infinitely variable speed control</li> <li>Sliding on/off control with power on indicator</li> <li>Extract/intake airflow</li> <li>Supply voltage 220-240V 50Hz</li> </ul>	<ul style="list-style-type: none"> <li>Surface or recess mounting</li> <li>160 x 86mm</li> <li>Used with: GX9/12, WX9/12, PX9/12, RX9/12</li> <li>Do not mix fan size. For use with up to four 12" or six 9" fan units</li> </ul>